

Butler Track & Field Lights

Summary Report

June 17, 2019

Table of Contents

Executive Summary	3
Background	4
Recent History	5
Why Permanent Lights on Butler Field?	5
Why Permanent Lights on Butler Field Now?	6
Summary of Meetings Related to Butler Track & Field Light Project	6
November 20, 2018 and before...	6
December 19, 2018	6
January 7, 2019	6
January 9, 2019	6
January 14, 2019	6
January 22, 2019	6
January 29, 2019	6
February 11, 2019	7
March 11, 2019	7
April 8, 2019	7
April 10, 2019	7
April 25, 2019	7
April 29, 2019	7
May 7, 2019	7
May 13, 2019	8
May 15, 2019	8
June 6, 2019	8
June 10, 2019	8
June 13, 2019	8
June 19, 2019	8
Residents' Concerns, Suggestions and District Plan for Mitigation	8
Resident Concerns and Suggestions	8
District Plan for Mitigation	9
Light Pollution	9
Increased frequency and schedule of events	9
Traffic, Parking and Trash Migration	9
Noise	9

Executive Summary

The Board of Education is currently considering accepting a gift from Maroon & White in the estimated amount of \$810,000. The purpose of the gift is to purchase and install permanent lights on Butler Track & Field. The lights will be used to facilitate night-time events that are consistent with the philosophy and mission of the Scarsdale Public Schools. If this gift is accepted, the proposed project will undergo further design and specification. It will also be subject to the public bidding process. Specifically, the gift would allow the purchase and installation of new electrical service, conduit for data and audio, and four 80 foot poles for the field and track lighting. The poles will be located outside of the track, at approximately the 25 yard lines. While the vendor does not recommend poles less than 70 feet, a six pole system at 70 feet high will produce greater spillover. This proposed installation of LED lights will supplement the current metal-halide lights located on the track and paddle tennis courts, which currently turn off at 10:00 PM.

As the Butler Field turf replacement was completed in November 2018, the District was approached by Maroon & White, our athletic Booster club, with an offer of a generous gift to fund the purchase and installation of permanent lights.

The main purpose of this gift is to enhance the overall student-athlete experience. Other purposes are intended to benefit the greater Scarsdale community. These purposes are as follows:

- to provide our student-athletes with experiences commensurate with their peers in other Districts,
- to allow student-athletes to play in front of their peers and families,
- to offer safe, community-building events for the Scarsdale community,
- to provide lighting for athletic events without the associated pollution from the diesel-powered, lights that have been used to date.

Since the Fall of 2018, the District and Board have continued to engage both Maroon & White and the broader Scarsdale community throughout the consideration of this gift. We are particularly sensitive to the concerns of neighboring residents, who have expressed concerns about excessive light, noise, traffic, and other issues. We are also concerned about the wellness of our student-athletes.

With each concern, the District has made a good-faith effort to anticipate and proactively plan mitigating solutions. Regarding light, the latest technology and standards will limit spillover and focus light on the playing surface. Additionally, regarding noise, the District is investigating a custom, sound solution design to maintain sound within the stadium area. Plans for event and emergency management, including traffic-related issues, are being developed with the input of our Facility and Grounds Department, Director of Safety and Security, and the Scarsdale Police Department.

Over the past eight months, the Director of Physical Education, Health & Athletics has organized and attended meetings with various members of the community, including Scarsdale Neighborhood Association Presidents, concerned residents, supportive residents, independent

sports organization leadership, the Department of Parks, Recreation and Conservation along with other community leaders to address concerns and create a practical plan for usage.

Additionally, the Board and District have developed, with input from the community, a district-wide regulation on the use of all District fields that will further clarify and define the scope of District and permitted use, and directly address the concerns outlined above.

Background

In 2002, a Scarsdale community group began fundraising for a turf field at Butler Track & Field. Field lights were considered as part of that effort, but ultimately were not included. This was a collaborative, community-funded project with the Village as the lead agency. In the fall of 2005, Butler Turf Field opened for use.

Though still passing safety tests in the spring of 2015, Butler Field was showing signs of wear and was two years beyond its warranty. At that time a District-wide study of field conditions was started, and a replacement plan for Butler Field was created.

As a result of this District-wide study all field repairs and renovations were reprioritized. Originally, Dean Field was prioritized to be renovated prior to Butler Field renovations however due to the condition of Butler Field, only repairs for major safety concerns were made to Dean Field in 2016. As part of the 2018 Bond, Dean Field is scheduled to be completely renovated with a natural grass surface in the summer of 2020. During the field study and planning, costs for field lights were estimated as major improvements. Costs for field lights were communicated to Maroon & White as program enhancements. Only essential program needs were included in the field replacement.

Replacement of Butler Field was planned to commence in the 2018-19 school year. The Butler Track & Field Committee was formed from concerned residents, parents, coaches, athletes and District administrators. Through the Committee's work, other needs, including infill type and the relocation of field events, were identified. Plans were updated to include upgraded rubber infill; a steeplechase, relocated long jump and discus; and rebuilt shot put; D-zones; and pole vault areas. Essential elements identified through the process were included in the 2018-2019 budget. As an enhancement, field lights were not included as part of the project. Again, this process was collaborative, including many constituents in the community, gaining Village approval and extension of the District's lease.

During the spring of 2018, several areas on the field caused concern for safety. The Athletic and Buildings & Grounds departments monitored and maintained Butler Field daily. During the summer of 2018, areas on Butler Field became unsafe and irreparable, and the field was closed.

Renovation on Butler Field began in October 2018. The turf field, steeplechase, long jump, pole vault and D-zones were materially completed in December 2018. The areas for throwing events were constructed in January 2019. The last remaining part of this project is to mill, resurface and paint the track, which will occur in June and July of 2019.

While the essential elements of the Butler Track & Field renovation were included in the 2018-2019 budget, Maroon & White became motivated to see the stadium complete. They renewed their interest to fund lights for Butler Track & Field and approached the District to gift \$200,000 of their own funds, while committing to fundraise the estimated, remaining balance of \$610,000.

Recent History

Over the past 4 years, the Athletic Department has rented portable lights for up to 2 consecutive months in the fall at both Dean and Butler Fields. Each year, five to seven games “under the lights” have enhanced the program experiences of our student athletes who play field sports and have been conducted without complaints from the neighbors. These events have proven to be safe, community-building events for the whole Scarsdale Community. Due to the light, noise, and air pollution caused by diesel-powered portable lights, permanent lights are a desirable solution.

Based upon meetings in January of 2019 with the select community members, the District Administration realized that community members may have concerns regarding the installation of permanent lights due to a perceived impact on quality of life resulting from the frequency and duration of light use. We realized that more outreach was necessary to ensure a successful District, Village, and community partnership. If planned and conducted properly, the fundraising, purchase, installation, and use of lights on Butler Track & Field could be a source of pride for the Scarsdale community and a model for future projects.

In January of 2019, Maroon & White pledged to spearhead the effort to raise \$810,000 for the purchase and installation of permanent LED lights (Light-Structure™ System with TLC for LED™) on Butler Track and Field, and to donate \$200,000 towards the project.

In January, the District Administration planned to schedule a series of meetings to engage the greater Scarsdale community. At virtually every meeting this year, the Board of Education included Butler Track & Field Lights as a topic on the agenda, allowed public comment at each meeting, and addressed concerns expressed in person and via email. Based upon previous use, a track and field light use schedule would be developed along with a plan and guidelines for the use of track & field lights. Trips to neighboring facilities for interested community members was also discussed and will likely take place in the early fall.

Why Permanent Lights on Butler Field?

Games “under the lights” have enhanced our student athletes’ experiences. The safe, community-building events appeal to the entire Scarsdale Community. Portable, diesel-powered lights create light, noise, and air pollution inconsistent with the sustainable practices of the District. Other, comparable districts have added state-of-the-art LED lighting to their fields with positive community outcomes.

Why Permanent Lights on Butler Field Now?

We should not continue with the environmentally unsound, diesel-powered lights. Current technology has significantly improved over the lights that had been previously considered and have virtually no light spillover. Our athletes and community deserve lights consistent with the high standards that our community demands.

Summary of Meetings Related to Butler Track & Field Light Project

November 20, 2018 and before...

Co-Presidents of Maroon & White expressed renewed interest in completing the Butler Track & Field replacement and renewal with permanent lighting. On November 20, 2018, members of the District Administration placed a conference call with the District lawyer to inquire about accepting a gift of such magnitude and the process by which a project could be undertaken.

December 19, 2018

Maroon & White Co-Presidents, an officer from the Scarsdale Schools Education Foundation, officers of the Board of Education, District Administrators and the District's lawyer met to discuss the process by which Maroon & White could fund a project with the District as the lead agency.

January 7, 2019

At the regularly scheduled Maroon & White Board Meeting, the M&W Board voted in favor of fundraising for the permanent lights.

January 9, 2019

An initial community outreach meeting was scheduled. Potential concerns of neighboring residents were identified. Feasibility of fundraising was affirmed.

January 14, 2019

The Board of Education formally allowed the Director of Physical Education, Health & Athletics to engage the community in discussion about the purchase and installation of lights on Butler Track and Field. The Board of Education provided direction to (a) address preliminary concerns about practice creep and donor recognition, and (b) reinforce the planning and implementation of lights on Butler Track and Field will continuously engage the community throughout the process.

January 22, 2019

A meeting was held for Scarsdale Neighborhood Association Presidents to inform them of the potential project and to identify any potential concerns about the installation of permanent lights on Butler Track & Field.

January 29, 2019

A meeting was held for residents who expressed concern about the project. The meeting was well-attended. Community members were extremely helpful. They identified their concerns and potential issues, while suggesting potential solutions. Concerned residents were supportive of

enhancing student-athletes experiences. However, many expressed strong concerns about change in their quality of life.

February 11, 2019

The Director of Physical Education Health & Athletics provided an update to the Board of Education regarding residents' concerns and planned mitigation for those concerns. He also presented anticipated use and the proposed lighting solution. The development of rules and enforcement as well as a plan for recognition of donors was identified as future work.

March 11, 2019

The Director of Physical Education Health & Athletics provided an update to the Board of Education. He presented historic District and community use. Application of Village ordinances, approval processes and requirements of a proposed policy were reported.

April 8, 2019

The Director of Physical Education Health & Athletics provided an update to the Board of Education. The purpose of the upcoming April 10 meeting was shared. The need for permanent lights was renewed. Potential factors affecting resident quality of life were reviewed. Future use of lights was proposed and rationale was presented. Memorandum of Understanding and SEQRA requirements were explained. Light use regulation and recognition requirements were updated.

April 10, 2019

A community meeting was scheduled. Scarsdale Neighborhood Association Presidents, concerned residents, independent sports organization leadership, & Parks, Recreation and Conservations were invited. The Rye City School District (RCSD) policy on light use was identified by concerned residents as a way to assuage concerns. Concerns and mitigations were discussed and documented. Specific details regarding a light use regulation patterned after the RCSD policy were discussed.

April 25, 2019

The Director of Physical Education Health & Athletics met with the Director of Safety and Security and Captain Murphy from the Scarsdale Police Department. Procedures for event management, safety and security were discussed. Future plans about event and emergency management were planned with Sgt. DelBene.

April 29, 2019

The Director of Physical Education Health & Athletics provided an update to the Board of Education. Recommendations were made specifically about light use. Current schedules were provided. Mitigation of residents' concerns were suggested. Limitation of mitigation was identified.

May 7, 2019

A community meeting was scheduled. Scarsdale Neighborhood Association Presidents, concerned residents, independent sports organization leadership, other community leadership and

members of the PRC were invited. An update was provided to all of the attendees. Restrictions on light use were the main focus of the meeting.

May 13, 2019

The Director of Physical Education Health & Athletics provided an update to the Board of Education. The first reading of the Use of Permanent Field Lighting at Butler Track & Field Regulation took place. Several suggestions were provided.

May 15, 2019

The Director of Physical Education Health & Athletics provided an update to PRC. The PRC expressed support for the lights on Butler Track & Field.

June 6, 2019

The Director of Physical Education Health & Athletics was invited to attend the Old Scarsdale Neighborhood Association PotLuck Dinner to provide an update on the Butler Track & Field Light Project.

June 10, 2019

The Director of Physical Education Health & Athletics provided an update to the Board of Education. The second reading of the Use of Permanent Field Lighting at Butler Track & Field Regulation took place. Changes related to field use and permitting were included. Memorandum of Understanding with Maroon & White was approved. Maroon & White Donor recognition was approved. SEQRA report was accepted.

June 13, 2019

A community meeting was scheduled. Scarsdale Neighborhood Association Presidents, concerned residents, independent sports organization leadership, & Parks, Recreation and Conservations were invited. The current status of the project was reported and attendees offered their views.

June 19, 2019

A joint work session among Board of Education members and the Village Trustees has been scheduled. Butler Track & Field Lights are the only item on the agenda.

Residents' Concerns, Suggestions and District Plan for Mitigation

Resident Concerns and Suggestions

Resident concerns were initially identified as light pollution, an increased frequency in night events, the scheduling of events, noise and increased traffic. Other concerns included the impact of parking on neighboring streets, and the migration of trash from the high school campus into the neighborhood.

Below, please find an aggregate list of residents' suggestions to mitigate concerns.

1. Installation of natural screening to mitigate light and noise extrusion from the high school campus.
2. Installation of a "targeted" sound system to minimize extrusion of announcements and music during events.
3. Assignment of staff to manage car traffic during arrivals, parking, and departures at night events.
4. Creation of a sample schedule of events for community consideration.
5. Creation of a committee, representative of community groups.
6. Development and enforcement of rules regarding the use of lights.

District Plan for Mitigation

Light Pollution

Light spillover was an early concern for residents. The District's plan is to utilize the most current technology to limit spillover outside of the Butler Track & Field stadium area. The DarkSky criteria requires sports lighting impact to be minimized at 150 feet from the facility perimeter. In addition, the District is considering the planting of trees to minimize the direct view of lights from adjacent streets.

Increased frequency and schedule of events

Residents were also concerned about the continued increase in light use over time. A practical, schedule will be planned and published in advance. Actual use will be tracked and reported to the Board of Education each year. All field use will be codified in a field use regulation.

Traffic, Parking and Trash Migration

An event management plan is currently under development. The plan will include staffing of supervision and security personnel. Residents and opponents will be sent directions regarding arrival, parking, and departure from large, evening events.

Noise

Noise has been the most prolific concern from residents. Notwithstanding the noise of whistles and general noise that occurs from athletic events, amplified music and announcements have the most effect on neighboring residents. Currently, a sound engineer is working on a sound solution which will keep amplified sound within the stadium area. The use of multiple line array speakers will focus sound into the field and bleachers, where it is intended.

Appendices

Butler Track & Field Update

Renovation, Recent Events, Realizations & Future Plans

Butler Track & Field Update

Renovation, Recent Events, Realizations & Future Plans

Background Information

- History
- Scarsdale UFSD Fields Master Plan
- Butler Field Replacement Process
- Butler Track & Field Closure
- Butler Track & Field Renovation
- Through the Renovation Process
- Recent Events
- Realizations
- Future Plans

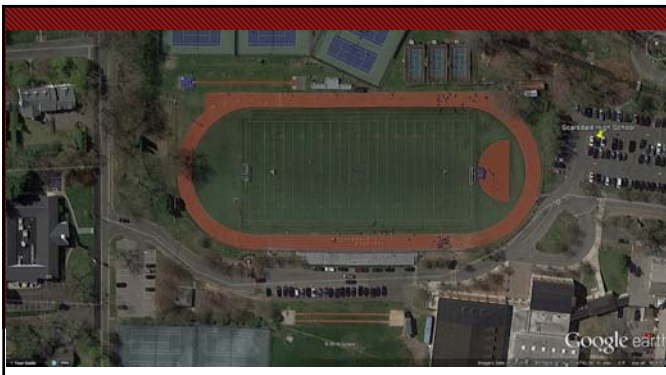


Background Information

History

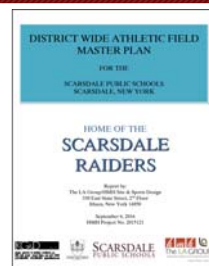


- In 2002, community began fundraising for a turf field. Field lights were considered but not included.
- In the fall of 2005, Butler Turf Field opened for use.
- In spring of 2015, though still passing safety tests, Butler Field was worn and 2 years beyond its warranty period.
 - Planning and prioritization of field replacement was restarted.



- All Scarsdale UFSD fields were studied.
- Field repairs and renovations were re-prioritized.
 - Major safety repairs were made to Dean Field.
 - Butler Field was made a top priority for replacement.
- Costs for field lights were estimated as major improvements.
- Costs for field lights were communicated to Maroon & White as program enhancements.

Scarsdale UFSD Fields Master Plan



Butler Field Replacement Process



- Replacement of Butler Field was planned to commence in the 2018-19 school year.
- Other needs, including infill type and the relocation of field events, were identified.
- Plans were updated to include upgraded rubber infill, a steeplechase, relocated long jump and discus, and rebuilt shotput, D-zones and pole vault areas.
- Essential elements identified through the process were included in the 2018-2019 budget.
- As an enhancement, field lights were not included as part of the project.

Butler Track & Field Closure



- Spring 2018 - several areas on the field caused concern for safety.
 - The Athletic and Buildings & Grounds departments monitored and maintained Butler Field daily.
- Summer 2018 - the areas became unsafe and irreparable.
 - Butler Track & Field was closed.

Butler Track & Field Renovation

Butler Track & Field Renovation



- Renovation began October 2018.
- The turf field, steeplechase, long jump, pole vault and D-zones were completed in December 2018.
- Throwing events were laid out and poured in January 2019.
- Track will be remilled in April 2019.
- Track will be resurfaced & painted in June 2019.

Through the Renovation Process

- Essential elements** of the Butler Track & Field renovation were included in the 2018-2019 budget.
- Maroon & White renewed their interest in fundraising for lights as an **enhancement** for Butler Track & Field.
- Costs to light Butler Track & Field have been estimated at approximately \$810,000.



Recent Events

Recent Events

Four meetings have been held to examine the feasibility of a community fundraising effort for lights on Butler Field.

1. November 20 - Administration and District counsel
2. December 19 - Maroon & White Co-Presidents, a representative from the Scarsdale Education Foundation, Board of Education representatives, District administrators and District counsel
3. January 7 - Maroon & White Board
4. January 9 - Initial Community Outreach

Realizations

- Over the past 4 years, the Athletic Department has rented portable lights for up to 2 consecutive months.
- Games "under the lights" have enhanced the program experiences of our student athletes who play field sports. The events are safe, community-building events for the whole Scarsdale Community.
- Permanent lights are a desirable solution to the light, noise, and air pollution caused by diesel-powered portable lights.

Realizations

- Community members could be adversely affected based upon the frequency and duration of light use.
- More outreach is necessary to ensure the success of a District, Village, and community partnership.
- If planned and conducted properly, the fundraising, purchase, installation, and use of lights on Butler Track & Field could be a source of pride for the Scarsdale community and a model for future projects.

Future Plans – Maroon & White Pledge

MAROON AND WHITE PLEDGES to spearhead the effort to raise \$810,000 for the purchase and installation of permanent LED lights (Light-Structure™ System with TLC for LED™) on Butler Track and Field, and to donate \$200,000 towards the project.

Future Plans

- Schedule a series of meetings to engage the greater Scarsdale community.
- Based upon previous use, develop a track and field light use schedule.
- Create and communicate a plan and guidelines for use of track & field lights.
- Schedule trips to neighboring facilities for interested community members.



Questions?

Butler Track & Field Lights

A School-Community Partnership

Update for the Board of Education
February 11, 2019

Why Reconsider Lights on Butler Field?

- Games “under the lights” have enhanced our student athletes’ experiences. The safe, community–building events appeal to the entire Scarsdale Community.
- Portable, diesel-powered lights create light, noise and air pollution inconsistent with the sustainable practices of the District.
- Other, comparable districts have added state-of-the-art LED lighting to their fields with positive community outcomes.

Why Lights on Butler Field Now?

- We cannot continue with the environmentally unsound diesel-powered lights.
- Current technology has significantly improved over the lights that had been previously considered and have virtually no light spillover.
- Our athletes and community deserve lights consistent with the high standards that our community demands.

Percentage of Opponents with Lights

Sport	School Year				
	2014-15	2015-16	2016-17	2017-18	2018-19
Field Hockey	56	69	73	77	79
Football	50	89	78	78	50
Boys' Soccer	46	73	55	53	50
Girls' Soccer	54	62	64	77	67
Boys' Lacrosse	86	89	82	81	85
Girls' Lacrosse	80	77	75	71	82

Lights on Butler Track & Field

- On January 14, 2019, the Board of Education formally allowed me to engage the community in discussion about the purchase and installation of lights on Butler Track and Field.
- The Board of Education provided direction:
 - to address preliminary concerns about **practice creep** and **donor recognition**.
 - to reinforce - the planning and implementation of lights on Butler Track and Field will continuously engage the community throughout the process.

Community Meetings

- January 22, 2019 - A meeting was held for Neighborhood Association Presidents to identify any potential concerns about the installation of permanent lights on Butler Track & Field.
- January 29, 2019 - A meeting was held for residents who expressed concern about the project.
- Both meetings were well-attended. Community members were extremely helpful - - identifying their concerns and potential issues, while suggesting potential solutions.
- All were supportive of enhancing student-athletes experiences.
- Many expressed strong concerns about change in quality of life.

Residents' Concerns

Major concerns were identified as:

- Light pollution
- Increase in frequency of events
- Scheduling of events
- Noise
- Traffic

Other concerns included:

- Parking on neighboring streets
- Trash migration

Residents' Suggestions

Suggestions were offered as follows:

- Installation of natural screening to mitigate light and noise extrusion from the high school campus.
- Installation of a "targeted" sound system to minimize extrusion of announcements and music during events.
- Assignment of staff to manage car traffic during arrivals, parking, and departures at night events.
- Creation of a sample schedule of events for community consideration.
- Creation of a committee, representative of community groups.
- Development and enforcement of rules regarding use of lights.

Resident Concerns

Light Pollution

Permanent State-of-the-Art Musco LED Lights

- Light-Structure™ System with TLC for LED™
- LED lighting for Butler Track and Field would be compliant with International DarkSky Association's design criteria for Community Friendly Outdoor Sports Lighting...the best practices standard.
- Criteria include /measurements/standards on:
 - Targeted Illumination
 - Backlight, Uplight, Glare
 - Lighting Zoning
 - Application Efficiency
- Controls - automatic and/or remote control system

Permanent State-of-the-Art Musco LED Lights

- The DarkSky criteria requires the sports lighting impact to be minimized at 150ft from the facility perimeter. Essentially, everything 150ft or further from the field will be in the dark and not impacted by the lights.
- Via Google Maps, nearest home on Wayside Lane is 180ft from the perimeter of the track.
- Musco can tailor SHS lighting design to have light levels and glare impact be zero at the school's property line along Wayside Lane.

Butler Track & Field Lights



Photo is of Louis Klein Middle School

Permanent LED lights are the best solution to reduce light, noise, and air pollution caused by diesel-powered portable lights.



Sayville Junior HS, Long Island



Resident Concerns

Increase in Scheduled Events

Potential Lighting Schedules

Monthly:

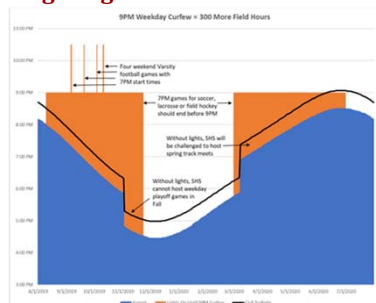
September	October	November
December	January	February
March	April	May
June	July	August

Light off Light on Lights most likely off/possibly on

Weekly:

Monday - Thursday - lights on until 9:00pm
Friday and Saturdays - lights on to accommodate games - latest 10:30pm
Sunday - lights on until 8 or 9pm

Possible Lighting Times



Current Practice End Times

- Weekdays
 - Fall - Indoor end time 8:30pm
 - Winter - Indoor end time 8:30pm
 - Spring - Indoor end time 7:30pm
- Weekends
 - Saturdays - 3:00pm, 5:00pm (days with testing)
 - Sundays - only as needed

Current Contests - Number of Night Games

Sport	2014-2019 5-Year Average			Maximum
	Home	Away	Total	
Field Hockey	.4	.6	1	1
Football	2.4	2.4	4.8	4
Boys' Soccer	.6	.8	1.4	1
Girls' Soccer	.4	1.6	2	1
Girls' Volleyball	.6	1.2	1.8	2
Boys' Basketball	2	.6	2.6	3
Girls' Basketball	.6	0	.6	2

* data only for Varsity A Teams

Potential Contests - Number of Home Night Games

Season	Sport	Anticipated Home Night Games
Fall	Field Hockey	2
	Football	5
	Boys' Soccer	4 (Varsity A, Varsity B)
	Girls' Soccer	4 (Varsity A, Varsity B)
Spring	Boys' Lacrosse	2
	Girls' Lacrosse	2

Natural and Logical Limits to Night Events

- Night contests are not preferred on weekdays or school nights.
- Season length is approximately 8 or 9 weeks in length.
 - The schedule has limited opportunities for equal distribution of games over all sports.
- SAT/ACT exams
- Opponent availability

Resident Concerns

Noise

Noise

- Music and announcements will be better monitored and directed toward the school.
- Experts in sound are being consulted to determine the extent to which sound can be focused within the "stadium" area of Butler Track & Field.

Resident Concerns

Traffic

Traffic

- Residents who attended the meeting on January 29, 2019 were asked to provide feedback about any traffic concerns during athletic events.
- Specifically, feedback was requested about the Cheerleading Tournament held on February 2, 2019.
- Opponents can be sent directions regarding entering, parking and exiting the campus.
- Staff may be assigned to assist with parking and directing traffic.

Next Steps

Convene a Committee

Convene a committee with representation from:

- Residents
- ISOs (soccer, football, lacrosse)
- Maroon & White
- High School Administrators
- Coaches

Review potential for recognition

- Examine historical examples
 - Form
 - Placement
 - Consistency
- Recommend procedures
 - Location
 - Form
 - Costs

Development and enforcement of rules

- Purpose for the use of lights
- Plan for use
 - Safety
 - Security
 - Cleanup
- Number of lighted events
 - Practices
 - Contests
- Curfew
- Months of operation
- Review period for rules

Questions, Comments and Discussion

Butler Track & Field Lights Update

Meeting of the Board of Education
March 11, 2019

Background Information

Meetings

1. **November 20** - Administration and District counsel
2. **December 19** – M&W Co-Presidents, a representative from the SSEF, BoE representatives, District administrators and District counsel
3. **January 7** - Maroon & White Board
4. **January 9** - Initial Community Outreach
5. **January 14** – Board of Education Meeting
6. **January 22** – Neighborhood Association Presidents
7. **January 29** – Residents who expressed concern
8. **February 11** – Board of Education Meeting

Need for Permanent Lights

- Games "under the lights" have enhanced the program experiences of our student athletes who play field sports. The events are safe, community-building events for the whole Scarsdale Community.
- Permanent lights are a desirable solution to the light, noise, and air pollution caused by diesel-powered portable lights.

Concerns

Quality of life

- Pollution (noise and light)
- Increased use
- Increased traffic
- Parking
- Trash

Historical Use

District Use

Monday through Thursday

- 8:00am – 3:00pm: Physical Education
- 3:00pm – 7:00pm: Athletics

Friday

- 8:00am – 2:00pm: Physical Education
- 2:00pm – 7:00pm: Athletics

Saturday

- 8:00am – 5:00pm: Athletics

District Use (Night Events)

Football – 4 home games (Dean Field)

Field Hockey – 1 home game

Boys' Soccer – 1 home game

Girls' Soccer – 1 home game

Community Use

Fall (Saturdays)

- 9:00am – 12:00pm: Football (2-4 games)

Fall (Sundays)

- 9:00am – 1:00pm: Football
- 1:00pm – 7:00pm: SYSC

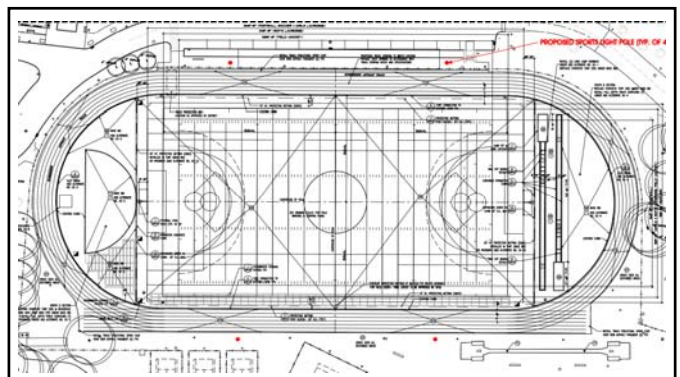
Spring (Sundays)

- 9:00am – 2:00pm: SRYSA or SYSC
- 2:00pm – 8:00pm: SYLA

Village Ordinance Restrictions

1. Noise (§205-1(D)) – 11:00pm to 7:00am
2. Obstructions, poles, wires and rubbish (§256)
 - Village Engineer to issue a permit
 - SEQR – Part 1 to Village
3. Structures (§132-7)
 - Village Building Inspector
4. Lease agreement

State Environmental Quality Review (SEQR)



SEQR Process

Scope

- Traffic
- Noise
- Use
- Visual impact

SEQR Process

Negative Declaration

- If an action is determined not to have significant adverse environmental impacts, a determination of nonsignificance (Negative Declaration) is prepared.

Conditioned Negative Declaration

- If the action can be made to equate to a non-significant action through enforceable terms conditions placed on a permit or license, a "conditioned negative declaration" may be prepared.

Positive Declaration

- If an action is determined to have potentially significant adverse environmental impacts, an "**Environmental Impact Statement**" is required and the applicant must submit a Draft Environmental Impact Statement (DEIS).

Policies

Light Use Policy

- Purpose for the use of lights
- Plan for use
 - Safety
 - Security
 - Cleanup
- Number of lighted events
 - Practices
 - Contests
- Curfew
- Months of operation
- Review period for rules

Recognition Policy

- Examine historical examples
 - Form
 - Placement
 - Consistency
- Recommend procedures
 - Location
 - Form
 - Costs

Future Plans

Upcoming Meetings

- Field Use Meeting – Spring and Fall Usage
- PRC Meeting – March 20
- Butler Track & Field Light Committee – Night usage & concerns

Upcoming work

- Memorandum of Understanding
- SEQR
- Determination of mitigating work

Butler Track & Field Lights Update

Meeting of the Board of Education
April 8, 2019

Butler Track & Field Lights – Update

1. General Information
2. Use of Butler Field
3. Rules and Guidelines
4. Future Plans

General Information

Meetings

1. **November 20** - Administration and District counsel
2. **December 19** – M&W Co-Presidents, a representative from the SSEF, BoE representatives, District administrators and District counsel
3. **January 7** - Maroon & White Board
4. **January 9** - Initial Community Outreach
5. **January 14** – Board of Education Meeting
6. **January 22** – Neighborhood Association Presidents
7. **January 29** – Residents who expressed concern
8. **February 11** – Board of Education Meeting
9. **March 11** – Board of Education Meeting

Meetings (upcoming)

1. **April 10** – Concerned Residents, Neighborhood Association Presidents, ISO leadership, PRC
 - Review usage and concerns.
 - Identify the charge of Committee.
 - Set timeline and schedule meetings.
2. **TBD** – at least 2 Committee Meetings

Need for Permanent Lights

- Games “under the lights” have enhanced the program experiences of our student athletes who play field sports. The events are safe, community-building events for the whole Scarsdale Community.
- These games are a unique opportunity for families and the community to attend and support student athletes.
- Permanent lights are a desirable solution to the light, noise, and air pollution caused by our currently used, diesel-powered portable lights.

Concerns

Potential factors affecting quality of life of residents

- Pollution (noise and light)
- Increased use
- Increased traffic
- Parking
- Trash

Use of Butler Field

Historical District Use

Monday through Thursday

- 8:00 am – 3:00 pm: Physical Education
- 3:00 pm – 7:00 pm: Athletics

Friday

- 8:00 am – 2:00 pm: Physical Education
- 2:00 pm – 7:00 pm: Athletics

Saturday

- 7:00 am – 5:00 pm: Athletics

Historic District Use (Special Night Events)

Football – 4 home games (Dean Field)

Field Hockey – 1 home game

Boys' Soccer – 1 home game

Girls' Soccer – 1 home game

Historic Community Use

Fall (Saturdays)

- 9:00 am – 12:00 pm: Football (2-4 games)

Fall (Sundays)

- 7:00 am – 1:00 pm: Football
- 1:00 pm – 7:00 pm: SYSC

Spring (Sundays)

- 9:00 am – 2:00 pm: SRYSA or SYSC
- 2:00 pm – 8:00 pm: SYLA

Proposed District Use

Monday through Thursday

- 8:00 am – 3:00 pm: Physical Education
- 3:00 pm – 7:00 pm: Athletics

Friday

- 8:00 am – 2:00 pm: Physical Education
- 2:00 pm – 7:00 pm: Athletics

Saturday

- 7:00 am – 5:00 pm: Athletics

Proposed District Use (Special Night Events)

Football	– 5 home games (Dean Field)
Field Hockey	– 2 home games
Boys' Soccer	– 4 home games
Girls' Soccer	– 4 home games
Boys' Lacrosse	– 2 home games
Girls' Lacrosse	– 2 home games

District Use (Special Night Events – Rationale)

To allow for each Varsity team to hold at least one special night event to be attended by their peers, their families, and the Scarsdale community.

These events would highlight contests celebrating seniors and their families as well as Raider Pride Weeks in the fall and spring seasons.

District Use (Night Events – Summary)

Season	Sport	Home Night Games		
		Current	Proposed	Net Increase
Fall	Field Hockey	1	2	1
	Football	4	5	1
	Boys' Soccer	1	4 (Varsity A, Varsity B)	3
	Girls' Soccer	1	4 (Varsity A, Varsity B)	3
Spring	Boys' Lacrosse	0	2	2
	Girls' Lacrosse	0	2	2
Totals		7	19	12

Rules & Guidelines

Memorandum of Understanding

- Agreement
 - Board of Education
 - Maroon & White (The Light the Future Committee)
- Outline
 - Responsibilities of each party
 - Conditions of gift acceptance
 - Costs
 - Mitigation
 - Recognition
 - Maintenance

SEQR Process

New York's **State Environmental Quality Review Act** (SEQR)

- Discretionary decisions
- Environmental impact
- Social and economic factors

When considering an action that has been the subject of a Final **EIS**, SEQR requires the agencies to balance the environmental impacts with social and economic factors when deciding to approve or undertake an "Action".

SEQR Process

Scope and focus of the independent review process

- Traffic
- Noise
- Use
- Visual impact

SEQR Process

Negative Declaration

- If an action is determined not to have significant adverse environmental impacts, a determination of nonsignificance (Negative Declaration) is prepared.

Conditioned Negative Declaration

- If the action can be made to equate to a non-significant action through enforceable terms conditions placed on a permit or license, a "conditioned negative declaration" may be prepared.

Positive Declaration

- If an action is determined to have potentially significant adverse environmental impacts, an "**Environmental Impact Statement**" is required and the applicant must submit a Draft Environmental Impact Statement (DEIS).

Light Use Regulation

- Purpose for the use of lights
- Plan for use
 - Safety
 - Security
 - Cleanup
- Number of lighted events
 - Practices
 - Contests
- Curfew
- Months of operation
- Review period for rules

Recognition Policy

- Gift to the District or School (Policy 1800)
- Recommended procedures should reflect historical examples
 - Location
 - Form
 - Placement
 - Consistency

M&W's Proposed Recognition

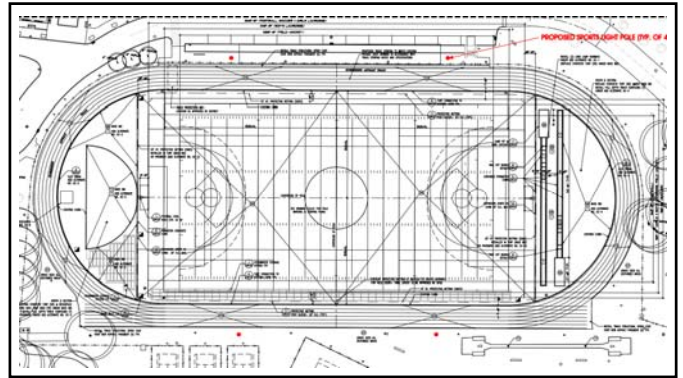
The purpose of M&W's proposed recognition plan is to:

- beautify a part of the school.
- be contained in a walkway that is currently asphalt.
- get away from any "naming rights"; there is no naming in the plan.
- be in-line with donor recognition from 15 years ago with the fundraising for the original Butler Field turf.
- simply say "thank you" to generous tax payers for privately funding this project.

Village Ordinance Restrictions

1. Noise (§205-1 (D)) – 11:00 pm to 7:00 am
2. Obstructions, poles, wires and rubbish (§256)
 - Village Engineer to issue a permit
 - SEQR – Part 1 to Village
3. Structures (§132-7)
 - Village Building Inspector
4. Lease agreement

Future Plans



Current & Upcoming Work

- Memorandum of Understanding – (under review)
- SEQR – Proposed gift to cover costs (April 8)
- Penultimate list of usage, concerns & mitigation (April 10)
- Solution to contain amplified sound within the "stadium"
- Event management procedures

Current & Upcoming Work

- Finalize review of usage, concerns & mitigation
- Review report for completeness (Light Use Regulation)
- Submit report to BoE

Meetings (upcoming)

1. **April 10** – Architect, Facilities, Audio Visual, &
2. **April 10** – Concerned Residents, Neighborhood Association Presidents, Independent Sport Organization leadership, Parks, Recreation, & Conservation
3. **TBD** – Committee
4. **TBD** – Committee

Butler Track & Field Lights Update

Meeting of the Board of Education
April 29, 2019

Butler Track & Field Lights – Update

1. Meetings
2. Recommendations
 - a) Use
 - b) Mitigations
 - c) Guidelines
3. Future Plans

Meetings

Meetings - Recent

11. **April 10** – Concerned Residents, Neighborhood Association Presidents, ISO leadership, M&W, PRC Leadership
 - a) Existing policy was identified to use as a template
 - b) Limits on use were discussed
 - c) Mitigations were identified

Meetings - Recent

12. **April 25** - Concerned Residents, Neighborhood Association Presidents, ISO leadership, M&W, PRC Leadership
 - a) Reviewed
 - i. Usage calendar
 - ii. Draft policy

Recommendations

Use - Practices

Practices:

- Monday-Thursday: Lights on only as needed until 8PM.
- Friday-Saturday: Lights on only as needed.
- Sunday: Either no lights, or allow lights as needed up to 6 PM.

Use - Contests

Night Games:

- Up to 15 total scheduled SHS night games including:
 - Up to 5 SHS football games, lights off expected by 10:30.
 - Other SHS night games, lights off expected by 9PM.
- Up to 4 additional SHS night games to accommodate potential playoff games.
- Up to 2 night games for each youth ISO to be fit within above light schedule.

BUTLER TRACK & FIELD LIGHT USE 2019-2020

LIGHT USE	START TIME	END TIME	LIGHT USE	START DATE	END DATE
FOOTBALL NIGHT GAME	7:00 PM	10:30 PM	END LIGHT USE (SUMMER)	August 1	August 18
OTHER HS SPORTS NIGHT GAME	7:00 PM	9:00 PM	END LIGHT USE (WINTER)	November 11	March 8
RECREATION LIGHT	7:00 PM	9:00 PM	END LIGHT USE (SPRING)	March 11	March 18
PRACTICE	7:00 PM	8:00 PM	END GAME USE (2 DATES EACH)	1. Not yet scheduled, to be scheduled only	

AUGUST	SEPTEMBER	OCTOBER	NOVEMBER	DECEMBER	JANUARY
1 2 3 4 5 6 7 8 9 10 11 12 13 14 15 16 17 18 19 20 21 22 23 24 25 26 27 28 29 30 31	1 2 3 4 5 6 7 8 9 10 11 12 13 14 15 16 17 18 19 20 21 22 23 24 25 26 27 28 29 30	1 2 3 4 5 6 7 8 9 10 11 12 13 14 15 16 17 18 19 20 21 22 23 24 25 26 27 28 29 30 31	1 2 3 4 5 6 7 8 9 10 11 12 13 14 15 16 17 18 19 20 21 22 23 24 25 26 27 28 29 30	1 2 3 4 5 6 7 8 9 10 11 12 13 14 15 16 17 18 19 20 21 22 23 24 25 26 27 28 29 30 31	1 2 3 4 5 6 7 8 9 10 11 12 13 14 15 16 17 18 19 20 21 22 23 24 25 26 27 28 29 30 31
FEBRUARY	MARCH	APRIL	MAY	JUNE	JULY
1 2 3 4 5 6 7 8 9 10 11 12 13 14 15 16 17 18 19 20 21 22 23 24 25 26 27 28 29	1 2 3 4 5 6 7 8 9 10 11 12 13 14 15 16 17 18 19 20 21 22 23 24 25 26 27 28 29 30 31	1 2 3 4 5 6 7 8 9 10 11 12 13 14 15 16 17 18 19 20 21 22 23 24 25 26 27 28 29 30	1 2 3 4 5 6 7 8 9 10 11 12 13 14 15 16 17 18 19 20 21 22 23 24 25 26 27 28 29 30 31	1 2 3 4 5 6 7 8 9 10 11 12 13 14 15 16 17 18 19 20 21 22 23 24 25 26 27 28 29 30	1 2 3 4 5 6 7 8 9 10 11 12 13 14 15 16 17 18 19 20 21 22 23 24 25 26 27 28 29 30 31

Mitigations

- Noise
- Light
- Traffic, Parking & Trash

Mitigation of Noise

- Unamplified sound (i.e., game time spectator cheering, whistles, etc.) may not be completely managed.
- Amplified sound will be managed through the design and installation of a targeted system which will be highly directional and limited in range. (Approximate Cost = \$30,000 + additional \$18,000 for trenching and installation of conduit.)

Mitigation of Light

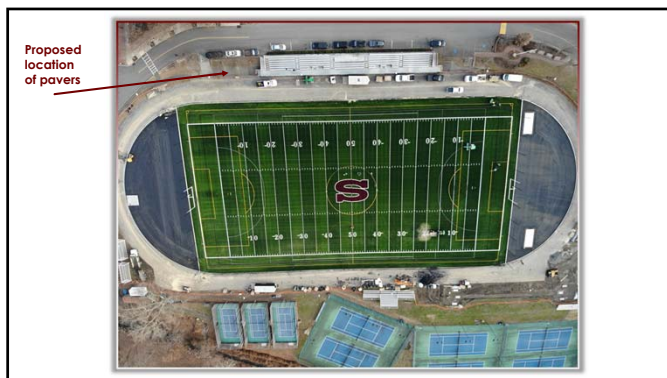
- Natural screening such as Green Giant arborvitae should be planted in bare areas to act as natural screening for light and sound. (Approximate cost = \$5,000)

Mitigation of Traffic, Parking & Trash

- In concert with the Scarsdale Police Department, the Director of Security, and our Head of Grounds, the Director of Physical Education, Health & Athletics is developing an event management plan. (No additional cost in supervision expected).

Memorandum of Understanding

- Mitigation
 - Noise
 - Light
- Donor Recognition



SEQR Process

Scope and focus of the independent review process

- Traffic
- Noise
- Use
- Visual impact

Light Use Regulation/Policy

Two existing policies which may apply:

- Policy 1500 – Public Use of School Facilities
- Policy 8330 – Authorized Use of School Owned Materials and Equipment

Light Use Regulation/Policy

Highlights

- Practices
 - End time – 8 pm during the school year. 9 pm during the fall pre-season.
- Contests
 - 15 games maximum, 4 additional if teams make the playoffs.
 - 2 games maximum per ISO sport

Future Plans

Current & Upcoming Work

- Finalize review of usage, concerns & mitigation
- Review report for completeness
- Submit report to BoE

Butler Track & Field Lights Usage, Mitigations, and Guidelines

Executive Summary

After the Board of Education Meeting on April 8, two meetings with concerned residents were held. One meeting was held on April 10 and the second meeting was held on April 25. On April 10, workgroups were created to cover the agenda work. The Rye City School District Light Use Policy was identified as a template for future guidelines. Limits on use were discussed and mitigations were identified. Between meetings, a usage calendar and a draft “policy” was created by the Director of Physical Education, Health and Athletics. At the meeting on April 25, the calendar and “policy” were reviewed and minor revisions were made. It was agreed that the draft “policy” be presented to the Board as the work of the Director of Physical Education, Health & Athletics. Residents requested additional time to review the documents and to provide feedback.

Use

- Practices:
 - Monday-Thursday: Lights on only as needed until 8PM.
 - Friday-Saturday: Lights on only as needed.
 - Sunday: Either no lights, or allow lights as needed up to 6 PM.
- Night Games:
 - Up to 15 total scheduled SHS night games including:
 - Up to 5 SHS football games, lights off expected by 10:30.
 - Other SHS night games, lights off expected by 9PM.
 - Up to 4 additional SHS night games to accommodate potential playoff games.
 - Up to 2 night games for each youth ISO to be fit within above light schedule.

Mitigation

- Noise
 - Unamplified sound (i.e., game time spectator cheering, whistles, etc.) may not be completely managed.
 - Amplified sound will be managed through the design and installation of a targeted system which will be highly directional and limited in range.
- Light
 - Natural screening such as arborvitae or cedar trees should be planted in bare areas to act as natural screening for light and sound.
- Traffic, parking & trash
 - In concert with the Scarsdale Police Department, the Director of Security, and our Head of Grounds, the Director of Physical Education, Health & Athletics is developing an event management plan.

Guidelines

- The Scarsdale Use Calendar provides dates of use as scheduled for the 2019-20 school year. The draft “policy” will govern maximum use. Scarsdale UFSD use will be prioritized.

Appendices

- Agenda – April 10, 2019 Meeting
- Rye City School District Stadium Lighting Policy
- 1st Draft Scarsdale Light Use Policy
- Scarsdale Use Calendar as of April 25, 2019
- Policy 1500 – Public Use of School Facilities
- Policy 8330 – Authorized Use of School Owned Materials and Equipment



Book	Board of Education Policies
Section	Policies 1000 - Community Related Policies
Title	Use of Permanent Field Lighting at Butler Track and Field - Regulation
Code	1500.1-R
Status	First Reading
Primary	Superintendent
Secondary	Athletics

USE OF PERMANENT FIELD LIGHTING AT BUTLER TRACK & FIELD

The Scarsdale Union Free School District procedures regarding the use of permanent field lighting at Butler Track & Field are as follows:

1. Permanent field lights at Butler Track & Field shall be used solely for the student-athletes and children in programs of the Scarsdale Union Free School District, the Scarsdale Parks, Recreation and Conservation Department, and approved Independent Sports Organizations (ISOs) as designated below. The lights shall not be used for adult leagues or activities.
2. Butler Track & Field lights shall be used for practices and contests during the months of August, September, October, November, March, April, and May.
3. Regular use of Butler Track & Field shall be during the daylight hours. Lights will be used to enhance the student-athlete experience through night contests and to facilitate practices that are hampered by weather and field closures. Lights on Butler Track & Field are allowed for the following purposes:
 - Scarsdale High School athletic team practices and contests
 - Scarsdale youth sports team practices and contests
4. Contests
 - Scarsdale Schools - A maximum of fifteen (15) night contests shall be allowed. Four (4) additional lighted contests will be allowed in the event Scarsdale teams host home playoff contests. If, on the afternoon of a scheduled night contest, another athletic contest must be scheduled for Butler Track & Field, lights may be used in the afternoon and continue into

the evening. In such a case, this shall be counted as one event of the fifteen (15) or four (4) additional lighted playoff contests.

- Night athletic contests at the Butler Track & Field shall begin by 7:00 p.m. Football games must be completed with lights off by 10:00 p.m. Other field sports must be completed by 9:00 p.m. In the event that the contest is delayed because of injury, overtime, or a significant public safety event and cannot be completed by the designated curfew time, the lights shall be turned off no later than 30 minutes after the conclusion of the contest.
- Twilight contests at the Butler Track & Field are contests that begin in daylight and end after sundown. In the cases of JV Field Hockey and JV Girls' Lacrosse contests, which are scheduled directly after their Varsity teams, these contest will begin after a brief warm-up period. A maximum of sixteen (16) twilight contests shall be allowed. Four (4) additional twilight contests will be allowed only if the supplied Section 1 schedule has an imbalance in home contests. Twilight contests will end no later than 8:00 p.m. In the event that the contest is delayed because of injury, overtime or a significant public safety event and cannot be completed by its curfew time, the lights shall be turned off no later than 30 minutes after the conclusion of the contest.
- Community – A maximum of ten (10) night contests will be allowed. Each Independent Sports Organization (ISO) will be provided a maximum of two (2) athletic night contests for a total of ten (10) contests within their respective season (Boys' Soccer (fall), Girls' Soccer (fall), Football (fall), Boys' Lacrosse (spring), Girls' Lacrosse (spring)).

5. Practices

- Scarsdale Schools - Practices using the lights may be scheduled in the fall and spring to facilitate those hampered by weather and field closures. These practices shall end with lights off by 8:00 p.m., Monday through Friday only. If necessary, the use of lights may be necessary to facilitate Modified team practices.
- Community - The use of Butler Track & Field lights for independent sports organization practices will be inclusive within the total allotment of the practice days listed above.

6. Weather Conditions

- Heat Index - If the *RealFeel* air temperature rises to 95 degrees during a regularly scheduled practice or if a heat index warning is issued, stopping practice, the lights may be used from 7:00 p.m. to 9:00 p.m. This will be a back-up plan for allowing teams to practice in safer conditions and will be allowed no more than five (5) times. This plan is in response to the Heat Index Procedures recommended and required by the NYSPHSAA. The District is aware of neighbors' concern with the District's use of lights and will invoke this additional use in extraordinary circumstance only.

- Inclement weather – In the case of inclement weather, *one athletic practice using the lights may be added for every day of field closure by the Village Parks, Recreation and Conservation Department.*

7. Safety, security, and sanitation

- The Athletic Director shall develop a safety, security, and clean-up plan for night activities. The Athletic Director shall be responsible for maintaining the log of night athletic contests and practices (and any safety, security issues to be solved).

8. Communication

- On or about July 15 of each year, the Director of Athletics shall publish the dates for fall night games.
- On or about March 15 of each year the Athletic Director shall publish the dates for spring night games.
- A special effort shall be made to notify the community, especially the neighboring residents, of these dates. In the event that games must be rescheduled due to inclement weather or other factors beyond the District's control, an attempt will be made to notify the community, especially the neighboring residents, of such changes.

9. Amplified Sound

- Amplified sound will only be used for contests as follows:
 - Thirty (30) minutes prior to the game for team warm-ups
 - Pre-game announcements including player names
 - National Anthem
 - Game-time announcements for football

10. Placeholder – Enforcement of this policy and penalties.

11. This policy will be reviewed and evaluated every year with a use report to the Board at the end of each school year. Prior to considering amending this policy and its procedures, the Board shall notify the community and shall re-establish an Advisory Committee consisting of Board members, neighbors, proponents, opponents, representatives of the donors and community members. The Advisory Committee will be charged to discuss options and report their recommendations to the full Board of Education. The Board will, in turn, consider the Advisory Committee report, as well as all the information compiled during the initial gift proposal discussions of 2018 and 2019, and any other revisions made to the original policy, in its deliberations and decision-making process.



Book	Board of Education Policies
Section	Policies 1000 - Community Related Policies
Title	Use of Permanent Field Lighting at Butler Track and Field - Regulation (Updated June 7, 2019) Draft 4
Code	1500.1-R
Status	Second Reading
Primary	Superintendent
Secondary	Athletics

USE OF DISTRICT FIELDS (DRAFT 4 - Updated June 7, 2019)

Use

1. The Scarsdale Union Free School District athletic fields are primarily designated for the education of the District's school children. However, they may be available for a non-school group provided:
 - not less than 50% of the membership of such group consists of District residents, and such group generally serves other needs of children and/or the welfare of the District.
 - the general time of use is between 7:00 AM and 8:00 PM. Any exceptions will be clarified, as appropriate, throughout this document.
2. Applications from non-school groups who will charge admission or raise funds will be considered only if the net proceeds are to be applied for educational or charitable purposes as required by law.
3. No alcoholic beverages, illegal substances, weapons, tobacco, smoking or vaping products are allowed in school buildings or on school grounds at any time.

Application for Rental/Permit

4. An application for rental of District facilities along with insurance and fee requirements can be found on the District's webpage at:
<https://www.scarsdaleschools.k12.ny.us/Page/51>.
5. A signed Rental Agreement, an Application for Facilities Rental, and an appropriate Certificate of Insurance must be submitted and approved prior to any use.

Insurance

6. The Board of Education requires users of a District field to provide evidence of liability insurance in the amount of \$1,000,000 (aggregate \$2,000,000) covering the facility and its use.
7. An original Certificate of Insurance shall be furnished by the applicant prior to use of these fields. The Certificate must indicate that the Scarsdale Union Free School District is the Certificate Holder and an Unrestricted Additional Insured.
8. The policy naming the District as additional insured must be from an A.M. Best rated "secured" New York State licensed insurer, must also contain a 30-day notice of cancellation, and state that the organization's coverage shall be primary and noncontributory for the District, its Board, and employees and volunteers. The additional insured status shall be provided using ISO endorsement CG20 26 or its equivalent. The user agrees to indemnify the District for any applicable deductibles and self-insured retentions. The user acknowledges that failure to obtain such insurance on behalf of the District constitutes a material breach of contract and subjects it to liability for damages, indemnification and all other legal remedies available to the District. The user is to provide the District with a certificate of insurance and additional insured endorsement that evidence the above requirements have been met. The failure of the District to object to the contents of the certificate or the absence of same shall not be deemed a waiver of any and all rights held by the District. A rental application submitted without a certificate of insurance and Form CG20 26 will be returned to the applicant. The District is not responsible for delays and conflicts in booking the field caused by the failure of the user to submit the appropriate documentation.

Fees

9. Users will be charged rental fees and for necessary custodial services if a custodian is not otherwise assigned to the field during the usage period. A schedule of charges can be obtained from the District website. Charges are based on space, time and services, as well as the number of custodians assigned for setup and cleanup. There will be a 3-hour minimum charge if a custodian is required to open school. If time or space use is increased, or if more labor is required, charges will be increased accordingly. The event must be canceled by notifying the Facilities Department directly at least 24 hours before the scheduled start time, or custodial overtime charges will be incurred. Users will be charged rental fees and for necessary custodial services if a custodian is not otherwise assigned to the field during the usage period. A schedule of charges can be obtained from the District website. Charges are based on space, time and services, as well as the number of custodians assigned for setup and cleanup. There will be a 3-hour minimum charge if a custodian is required to open school. If time or space use is increased, or if more labor is required, charges will be increased accordingly. The event must be canceled by notifying the Facilities Department directly at least 24 hours before the scheduled start time, or custodial overtime charges will be incurred.
10. All permits for the use of any school facility will be issued for specified hours, are non-transferable and are restricted to the specified purposes for which issued. Please be advised that all requests for fields usage are subject to final approval by the Building Principal and the Facilities Department. The Board of Education may, at its discretion, cancel the permit at any time.

Track and Field Lighting

11. The Scarsdale Union Free School District procedures regarding the use of the permanent track and field lighting at Butler Track & Field are as follows:

a. Track Lights:

1. Track lights at Butler Track & Field will be used primarily for the benefit of the Scarsdale community.
2. Track lights will be used at the discretion of the Director of Physical Education, Health, and Athletics in accordance with weather, safety, and other considerations until no later than 10:00 p.m.

b. Field Lights:

1. Primary field lights at Butler Track & Field will be used for the District's student athletes; the Scarsdale Parks, Recreation and Conservation Department, and approved Scarsdale Independent Sports Organizations (ISOs): Boys' Soccer (fall) Girls' Soccer (fall), Football (fall), Boys' Lacrosse (spring), and Girls' Lacrosse (spring).
2. Ordinarily, field lights will be used for athletic practices and contests only during the months of August, September, October, November, March, April, and May. The Superintendent may approve occasional use of field lights for non-athletic purposes.

c. Lighted Practices: Practices using the field lights may be scheduled in August, September, October, November, March, April, and May. Practices with lights shall be used Monday through Friday only with lights off by 8:00 p.m.

d. Lighted Contests:

1. Scarsdale Schools

- i. Night contests at Butler Track & Field will be scheduled to begin no later than 7:00 p.m. Football games must be completed with field lights off by 10:00 p.m. Other field sports games must be completed by 9:00 p.m. A maximum of fifteen (15) night contests shall be allowed per school year. Four (4) additional lighted contests will be allowed per school year if Scarsdale teams host home playoff contests. If on the afternoon of a scheduled night contest, another athletic contest must be scheduled for Butler Track & Field, lights may be used in the afternoon and continue into the evening. In such a case, this shall be counted as one event.
- ii. Twilight contests at Butler Track & Field are contests that begin in daylight and end after sundown. JV Field Hockey and JV Girls' Lacrosse contests, which are scheduled directly after Varsity contests, will begin after a brief warm-up period. A maximum of sixteen (16) twilight contests per school year will be allowed. Four (4) additional twilight contests will be allowed per school year if the Section 1 schedule has an imbalance in home contests. Twilight contests will end no later than 8:00 p.m.
- iii. Four (4) additional twilight contests will be allowed per school year if the schedule provided by Section 1 produces an imbalance in home contests. All twilight contests will end no later than 8:00 p.m.

2. Community

i. A maximum of ten (10) night contests will be allowed including two-night contests within their respective season for Boys' Soccer (fall), Girls' Soccer (fall), Football (fall), Boys' Lacrosse (spring), and Girls' Lacrosse (spring). Community contests must be completed with field lights off by 8:00 pm on Sunday-Thursday and 9:00 p.m. on Friday and Saturday.

3. If a contest is delayed because of injury, over time, or a significant public safety event and cannot be completed by its curfew time, the lights will be turned off no later than 30 minutes after the natural conclusion of the contest.

e. Safety, security, and sanitation - The Director of Physical Education, Health, & Athletics, in consultation with other District and Village officials, will develop and implement plans regarding parking; restrooms; concessions; safety, security, emergency management; and a clean-up plan for night activities.

f. Communication - The Director of Physical Education, Health, & Athletics will promptly publish the dates for night contests and will announce any schedule changes on the District website. A special effort shall be made to notify the community, especially the neighboring residents, of these dates. In the event that games must be rescheduled due to inclement weather or other factors beyond the District's control, an attempt will be made to notify the community, especially the neighboring residents, of such changes. Via email, changes will be communicated to Scarsdale Neighborhood Association Presidents, residents who have expressed concerns about track and field light use.

g. Amplified Sound will be used only for Scarsdale School contests and only for:

- i. a thirty (30) minute warm-up period prior to each contest;
- ii. Pre-game announcements and introductions;
- iii. the National Anthem; and
- iv. Game-time announcements.

Review and enforcement

12. This regulation will be reviewed and evaluated every year with a use report to the Board at the end of each school year. Prior to considering amending this regulation, the Board shall notify the community and shall re-establish an Advisory Committee consisting of Board members, neighbors, representatives of the donors, and community members. The Advisory Committee will be charged to discuss options and report their recommendations to the full Board. The Board will, in turn, consider the Advisory Committee report, as well as all the information compiled during the initial gift proposal discussions of 2018 and 2019, and any other revisions made to the original regulation, in its deliberations and decision-making process. The Athletic Director shall be responsible for maintaining a log of night athletic contests and practices (and any safety, security issues to be solved).

The Director of Physical Education, Health, and Athletics will deliver an annual report to the Board of Education regarding usage of the track and field lights and make any recommendations for changes to this policy.

13. Exceptions to this policy require the approval of the Superintendent.

USE OF SCARSDALE SCHOOL DISTRICT FIELDS
(DRAFT 4 – Updated June 12, 2019)

1) **Use**

- a) The District's athletic fields are primarily designated for the education and recreation of the District's school children. However, they may be available for a non-school group provided:
 - 1) not less than 50% of the membership of such group consists of District residents, and such group generally serves other needs of children and/or the welfare of the District.
 - 2) the general times of use is between 7:00 AM and 9:00 PM. Exceptions will be clarified, as appropriate, throughout this document.
- b) No alcoholic beverages, illegal substances, weapons, tobacco, smoking or vaping products are allowed in school buildings or on school grounds, either District property, or properties that are leased by the District, at any time.

2) **Application for Rental/Permit**

- a) An application for rental of District facilities along with insurance and fee requirements can be found on the District's webpage at: <https://www.scarsdaleschools.k12.ny.us/Page/51>
- b) Applications from non-school groups who will charge admission or raise funds will be considered, only if the net proceeds are to be applied for educational or charitable purposes as required by law.
- c) A signed Rental Agreement, an Application for Facilities Rental, and an appropriate Certificate of Insurance must be submitted and approved by the District prior to any use.
- d) All permits for the use of any school facility will be issued for specified hours, are non-transferable and are restricted to the specified purposes for which issued. Please be advised that all requests for fields usage are subject to final approval by the Building Principal and the Facilities Department. The Board may, at its discretion, cancel any permit at any time.

3) **Insurance**

- a) The Board requires any non-school group users of any District field to provide evidence of liability insurance in the amount of \$1,000,000 (aggregate \$2,000,000) covering the facility and its use.
- b) An original Certificate of Insurance shall be furnished by the applicant prior to use of these fields. The Certificate must indicate that the Scarsdale Union Free School District is the Certificate Holder and an Unrestricted Additional Insured.
- c) The policy naming the District as an additional insured must be from an A.M. Best-rated "secured" New York State licensed insurer, must also contain a 30-day notice of cancellation, and state that the organization's coverage shall be primary and noncontributory for the District, its Board,

and employees and volunteers. The additional insured status shall be provided using ISO endorsement CG20 26 or its equivalent. The user agrees to indemnify the District for any applicable deductibles and self-insured retentions. The user acknowledges that failure to obtain such insurance on behalf of the District constitutes a material breach of contract and subjects it to liability for damages, indemnification and all other legal remedies available to the District. The user is to provide the District with a certificate of insurance and additional insured endorsement that evidence the above requirements have been met. The failure of the District to object to the contents of the certificate or the absence of same shall not be deemed a waiver of any and all rights held by the District. A rental application submitted without a certificate of insurance and Form CG20 26 will be returned to the applicant. The District is not responsible for delays and conflicts in booking the field caused by the failure of the user to submit the appropriate documentation.

4) **Fees**

- a) Non-school group users will be charged rental fees and for necessary custodial services, if a custodian is not otherwise assigned to the field during the usage period. A schedule of charges can be obtained from the District website (<https://www.scarsdaleschools.k12.ny.us/Page/51>). Charges are based on space, time, and services, as well as the number of custodians assigned for setup and cleanup. There will be a 3-hour minimum charge if a custodian is required to open a school. If time or space use is increased, or if more labor is required, charges will be increased accordingly. The event must be canceled by notifying the Facilities & Grounds Department directly at least 24 hours before the scheduled start time, or custodial overtime charges will be incurred.

5) **Amplified Sound**

- a) Amplified sound will be used only for Scarsdale School events and only for:
 - i) a thirty (30) minute warm-up period prior to each contest;
 - ii) pre-event announcements and introductions;
 - iii) the National Anthem;
 - iv) event-time announcements.

6) **Track and Field Lighting**

- a) The District's procedures regarding the use of the permanent track and field lighting at Butler Track & Field are as follows:
 - i) **Track Lights:**
 - (1) Track lights at Butler Track & Field will be used primarily for the benefit of the Scarsdale community.
 - (2) Track lights will be used at the discretion of the Director of Physical Education, Health & Athletics in accordance with weather, safety, and other considerations until no later than 10:00 p.m.

ii) Field Lights:

- (1) Primarily, field lights at Butler Track & Field will be used for the District's student-athletes; the Scarsdale Parks, Recreation and Conservation Department; and approved Scarsdale Independent Sports Organizations (ISOs): Boys' Soccer (fall), Girls' Soccer (fall), Football (fall), Boys' Lacrosse (spring), and Girls' Lacrosse (spring).
- (2) Ordinarily, field lights will be used for athletic practices and contests only during the months of August, September, October, November, March, April, and May. The Superintendent, or designee, may approve occasional use of field lights for non-athletic purposes.
- (3) **Lighted Practices** - Practices on Butler Field using the field lights may be scheduled in August, September, October, November, March, April, and May. Practices with lights shall be used with lights off by 9:00 p.m.

(4) **Lighted Contests for Field Sports:**

(a) **Scarsdale Schools**

- (i) Night contests at Butler Track & Field will be scheduled to begin no later than 7:00 p.m. Football games must be completed with field lights off by 10:00 p.m. Other field sports games must be completed by 9:00 p.m. A maximum of fifteen (15) night contests shall be allowed per school year. Four (4) additional lighted contests will be allowed per school year if Scarsdale teams host home playoff contests. If on the afternoon of a scheduled night contest, another athletic contest must be scheduled for Butler Track & Field, lights may be used in the afternoon and continue into the evening. In such a case, this shall be counted as one event.
- (ii) Twilight contests at Butler Track & Field are contests that begin in daylight and end after sundown. JV Field Hockey and JV Girls' Lacrosse contests, which are scheduled directly after Varsity contests, will begin after a brief warm-up period. A maximum of sixteen (16) twilight contests per school year will be allowed.
- (iii) Four (4) additional twilight contests will be allowed per school year if the schedule provided by Section 1 schedule produces an imbalance in home contests. All twilight contests will end no later than 8:00 p.m.

(b) **Community**

- (i) A maximum of ten (10) night contests will be allowed including two night contests within their respective season for Boys' Soccer (fall), Girls' Soccer (fall), Football (fall), Boys' Lacrosse (spring), and Girls' Lacrosse (spring). Community contests must be completed with field lights off by 9:00 p.m. If a contest is delayed because of injury, overtime, weather, or a significant public safety event and cannot be completed by its curfew time, the lights will be

turned off no later than 30 minutes after the natural conclusion of the contest.

- (c) Safety, security, and sanitation - The Director of Physical Education, Health, & Athletics, in consultation with other District and Village officials, will develop and implement plans regarding parking; restrooms; concessions; safety, security, emergency management; and a clean-up plan for night activities.
- (d) Communication - The Director of Physical Education, Health, & Athletics will promptly publish the dates for night contests and will announce any schedule changes on the District website (<https://www.scarsdaleschools.k12.ny.us/domain/92>). A special effort shall be made to notify the community, especially the neighboring residents, of these dates. In the event that games must be rescheduled due to inclement weather or other factors beyond the District's control, an attempt will be made to notify the community, especially the neighboring residents, of such changes. Via email, changes will be communicated to Scarsdale Neighborhood Association Presidents and, residents who have expressed concerns about track and field light use.

7) **Review and enforcement**

- a) This regulation will be reviewed and evaluated every year and a use report will be delivered to the Board at the end of each school year. Prior to considering amending this regulation, the Board shall notify the community and shall re-establish an advisory committee consisting of Board members, neighbors, representatives of the donors, and community members. The advisory committee will be charged to discuss options and report their recommendations to the full Board. The Board will, in turn, consider the advisory committee report, as well as all the information compiled during the initial gift proposal discussions of 2018 and 2019, and any other revisions made to the original regulation, in its deliberations and decision-making process. The **Director of Physical Education, Health & Athletics** shall be responsible for maintaining a log of night athletic contests and practices (and any safety, security issues to be solved). The Director of Physical Education, Health, & Athletics will deliver an annual report to the Board of Education regarding usage of the track and field lights and make any recommendations for changes to this policy.
- 8) Exceptions to this **regulation** require the approval of the Superintendent, and/or designee.

Memorandum of Understanding

Between

The Board of Education of the Scarsdale Union Free School District

and

The Light The Future! Committee, a committee of Maroon and White, Inc.

The Light The Future! Committee, a committee of the Maroon and White, Inc. ("LTFC"), after consultation with the Board of Education (the "Board") of the Scarsdale Union Free School District (the "District") and the District's Administration, is enthusiastic about seeking to raise funds for the installation of permanent LED lights on Butler Field & Track (the "Project"). The LTFC, the Board and the Administration agree that the Project would be a valuable addition to the District. The LTFC and Board agree on the following specific aspects of the LTFC's funding of this effort.

1. The current estimated financial cost of the Project is \$810,000.
2. The LTFC intends to fundraise in order to present a gift of \$810,000 to the District covering 100% of the final cost of the Project.
3. The support of the Board and Administration will be important as the LTFC executes a fundraising campaign for the Project.
4. The LTFC will make every commercially reasonable effort to raise the funds set forth in paragraph 1 as expeditiously as possible, but cannot guarantee that it will be able to raise the full amount. In such a case, the viability of the Project will be determined by the Board in its sole discretion.
5. The LTFC agrees to keep the Board informed in writing on a monthly basis about its progress in securing donations, with the intention of having all the money raised for presentment of a gift to the District in June or July 2019.
6. Any donations to the LTFC remain the property of the LTFC until such time as a gift is presented to the District and accepted by the Board in a manner consistent with Board policy no.1800.
7. The Board and Administration agree to advise LTFC of relevant development and implementation plans for the Project.

8. The LTFC has requested and proposed a plan of recognizing donors to the LTFC for the Project. See Exhibit A. The Board agrees to consider such request in a timely manner. The means of recognizing donors for the Project will be determined by the Board, in its sole discretion, in accordance with its policy no. 1800. Should the Board approve a means of recognizing donors to the LTFC for the Project, such recognition plan shall be incorporated herein and the documents for such donor recognition plan shall be attached hereto as Exhibit B. The costs of recognizing donors will be the responsibility of the LTFC.
9. The LTFC understands and agrees that the Project's timing, scope, and implementation remain the sole responsibility of the Board and Administration.
10. It is anticipated that the Project will include a long-term warranty from the manufacturer covering parts, labor, control communications and light levels. Any costs not covered by this long-term warranty needed to fix or maintain in good repair the permanent field lights within the first twenty-four (24) months of installation will be funded by the LTFC and donated to the District, provided the Board will supply LTFC with an invoice detailing such repair and maintenance costs.

The Board and LTFC look forward to a continued working relationship concerning this fundraising effort for the benefit of the District's schools.

For the Board of Education of the
Scarsdale Union Free School District:

Name: _____

Title: _____

Date: _____

For the Light The Future! Committee,
a committee of the Maroon and White, Inc.:

Name: _____

Title: _____

Date: _____

EXHIBIT A

See original proposed plan for donor recognition [here](#).

DRAFT

EXHIBIT B

Butler Track and Field Lights Proposed Private Donor Recognition Plan

We are going to recognize **all** donors on the M&W website, in a full-page ad in the Scarsdale Inquirer and for 2-3 years in our Sports Journal that is printed three times per year at the conclusion of each sports season and distributed to athletes and their parents. We would like to provide permanent recognition for donations of \$1,000 and above.

We've chosen a \$1,000 donation as the minimum threshold for permanent recognition for practical reasons--incentive for donors, the cost of recognition, and the constraints of available space for recognition. We desire a tiered recognition plan so we can tastefully recognize a larger donor with one recognition instead of multiple recognitions.

With a tiered recognition program that has a lowest limit of \$1,000 for permanent recognition, we estimate the total cost of reconstructing the pathway with permanent recognition will cost \$15,000-\$25,000 and will recognize between 100-200 donors. By contrast, an un-tiered recognition program that evenly recognizes each \$250 donation would allow a \$10,000 donor to claim 40 bricks if they wanted. Such an outcome would result in a recognition cost of over \$80,000 plus present the challenge of fitting ~3,600 bricks into a walkway that can only handle ~2,000 bricks.

Our proposed plan compared to private fundraising precedents:

- Permanent recognition with pavers for the original turf field ~15 years ago required a minimum donation level of \$1,000.
- Pavers associated with the SSEF fundraising were introduced after ~90% of targeted funding had already been secured. Pavers accounted for 6-7% of the gross funds raised (\$150,000 out of \$2.3MM), with ~20% of the paver revenue dedicated to the paver recognition.

In our permanent donor recognition, we would like to not only beautify and improve the school's appearance but contain the recognition close to Butler Field.

We would like to offer personalized brick pavers for the walkway between the stands and the emergency vehicle road adjacent to Butler track and field. The walkway is approximately 50' x 10' and we estimate the cost of installation will be \$15,000-\$25,000. Please refer to the below pictures that detail the space.

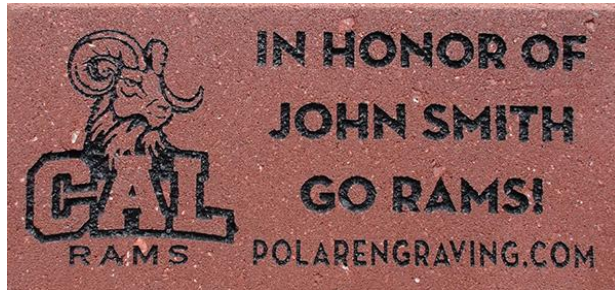


Photos: Walkway of the proposed area for Butler Track and Field Lights Donor Recognition.

We would like to recognize private donors in the following manner:

<u>Donation Amount</u>	<u>Recognition</u>
\$1K+ - \$4.99K ⁽¹⁾	4" x 8" maroon engraved brick
\$5K-\$9.99K ⁽²⁾	8" x 8" maroon engraved brick
\$10K - \$24.99K ⁽³⁾	8" x 8" gray brick with engraved bronze insert for each donation
\$25K - \$49.99K ⁽⁴⁾	8" x 8" maroon brick with engraved bronze insert for each donation
\$50K+ ⁽⁵⁾	10" x 10" gray brick with engraved bronze insert for each donation
\$100K+ ⁽⁵⁾	10" x 10" maroon brick with engraved bronze insert for each donation
\$200,000	2' x 2' gray brick engraved – Raider Pride - Maroon and White

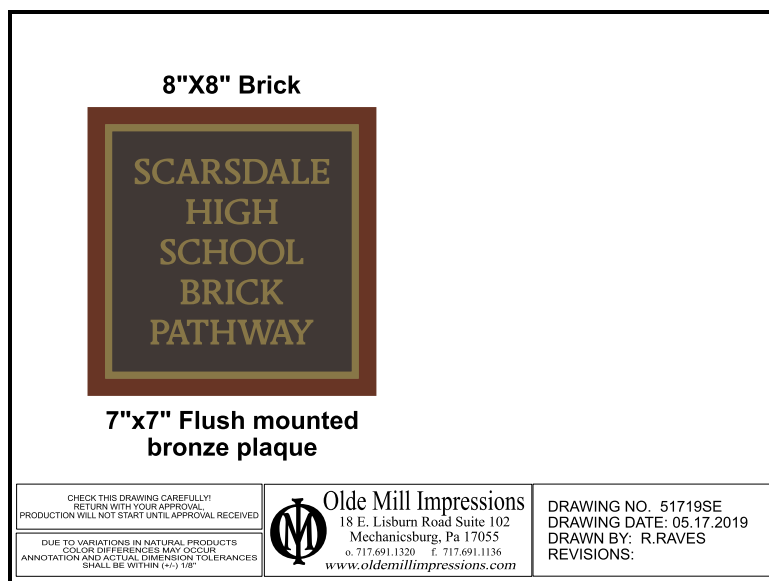
Examples:



(1) 4"x8" brick



(2) 8"x8" brick



(3 & 4) Examples of 8 " x 8" with bronze insert

(5& 6) Would be the same as 3 & \$ except that the brick size would be 10 " x 10"

J.C. Broderick & Associates, Inc.

Environmental / Construction Consulting & Testing



1775 Expressway Drive North
Hauppauge, NY 11788
631.584.5492
Fax: 631.584.3395
www.jcbroderick.com

May 9, 2019

Mr. Stuart Matthey
Assistant Superintendent for Business
Scarsdale Public Schools
2 Brewster Road
Scarsdale, New York 10583

Re: **SEQRA Review of
Scarsdale Public Schools
Proposed Installation of Sports Lighting on Butler Field**

JCB#: **19-42732**

Dear Mr. Matthey:

J.C. Broderick & Associates, Inc. (JCB) performed a review of the proposed scope of work for Scarsdale Public Schools Proposed Installation of Sports Lighting on Butler Field (Project). It is our opinion that the scope of work is categorized as an Unlisted Action under 6 NYCRR Part 617 (State Environmental Quality Review). Therefore, as required, the Short Environmental Assessment Form (EAF) was completed and has concluded that based upon the information and analysis performed, that the proposed action (Project) will not result in any significant adverse environmental impacts under Environmental Conservation Law, Article 8. Basis for this determination can be referenced in the attached Evaluation of the Magnitude and Importance of Project Impacts.

The New York State Department of Environmental Conservation (NYS DEC) provides the Assessment Forms for a lead agency to determine significance of a project based upon the classification of the project. Part 1 of these forms compile detailed site specific physical aspects of the project site, Part 2 is designed to help a lead agency identify and inventory the potential resources that could be affected by a proposed project, and Part 3 provides an evaluation of impacts and a detailed justification for the determination of significance.

Attached please find all forms and some supporting information and documents utilized in the determination of significance including:

- The completed Short Environmental Assessment Form
- The Evaluation of the Magnitude and Importance of Project Impacts.
- The Project Site Plan
- Lighting Brochure; Introducing TLD for LED®
- NYS OPRHP Resource Evaluation

If you should have any questions, please do not hesitate to call.

Sincerely,

A handwritten signature in cursive script that reads 'Kristen Nannini'.

Kristen Nannini

J.C. Broderick & Associates, Inc.

Short Environmental Assessment Form

Part 1 - Project Information

Instructions for Completing

Part 1 – Project Information. The applicant or project sponsor is responsible for the completion of Part 1. Responses become part of the application for approval or funding, are subject to public review, and may be subject to further verification. Complete Part 1 based on information currently available. If additional research or investigation would be needed to fully respond to any item, please answer as thoroughly as possible based on current information.

Complete all items in Part 1. You may also provide any additional information which you believe will be needed by or useful to the lead agency; attach additional pages as necessary to supplement any item.

Part 1 – Project and Sponsor Information			
Name of Action or Project: Scarsdale Public Schools Proposed Installation of Sports Lighting on Butler Field			
Project Location (describe, and attach a location map): Butler Field is the South Athletic Track & Field at the Scarsdale High School 1057 Post Rd Scarsdale, NY 10583 Corner of Wayside Ln & Post Rd			
Brief Description of Proposed Action: Proposed installation of 4 sport lights at the Butler Field surrounding the sides of the existing track with the intention of providing an average field overlay of 50 footcandle to provide a permanent solution for the current evening sport and recreational use of the field. The sport lights shall be from the Musco Brand TLC for LED® (Total Light Control), or equal, and minimize glare and spillover to residential neighbors and public roadways. The poles will also include lower level security lighting. The overhead pole lighting shall only be lite for the duration of evening events after sundown, with a limit of 10:30PM on any single game night and 8PM on any practice night. The overhead lights shall not remain on during times when the field is unused and will be turned off at the earliest possible time each night they are in use. Additionally, enough room in the electrical conduit as well as pole structure shall be designed to allow for future installation of other available features such as speakers, security devices, and wifi access points.			
Name of Applicant or Sponsor: Scarsdale Public School		Telephone: 914-721-2400	
		E-Mail:	
Address: 2 Brewster Road			
City/PO: Scarsdale		State: New York	Zip Code: 10583
1. Does the proposed action only involve the legislative adoption of a plan, local law, ordinance, administrative rule, or regulation? If Yes, attach a narrative description of the intent of the proposed action and the environmental resources that may be affected in the municipality and proceed to Part 2. If no, continue to question 2.		NO <input checked="" type="checkbox"/>	YES <input type="checkbox"/>
2. Does the proposed action require a permit, approval or funding from any other government Agency? If Yes, list agency(s) name and permit or approval: Village of Scarsdale, Engineering & Building		NO <input type="checkbox"/>	YES <input checked="" type="checkbox"/>
3. a. Total acreage of the site of the proposed action?		<u> <5 </u> acres	
b. Total acreage to be physically disturbed?		<u> < 0.25 </u> acres	
c. Total acreage (project site and any contiguous properties) owned or controlled by the applicant or project sponsor?		<u> ~31 </u> acres	
4. Check all land uses that occur on, are adjoining or near the proposed action:			
5. <input type="checkbox"/> Urban <input type="checkbox"/> Rural (non-agriculture) <input type="checkbox"/> Industrial <input type="checkbox"/> Commercial <input checked="" type="checkbox"/> Residential (suburban)			
<input type="checkbox"/> Forest <input type="checkbox"/> Agriculture <input type="checkbox"/> Aquatic <input checked="" type="checkbox"/> Other(Specify): Educational			
<input checked="" type="checkbox"/> Parkland			

5. Is the proposed action, a. A permitted use under the zoning regulations? b. Consistent with the adopted comprehensive plan?	NO <input type="checkbox"/> <input type="checkbox"/>	YES <input checked="" type="checkbox"/> <input checked="" type="checkbox"/>	N/A <input type="checkbox"/> <input type="checkbox"/>
6. Is the proposed action consistent with the predominant character of the existing built or natural landscape?	NO <input type="checkbox"/>	YES <input checked="" type="checkbox"/>	
7. Is the site of the proposed action located in, or does it adjoin, a state listed Critical Environmental Area? If Yes, identify: _____	NO <input checked="" type="checkbox"/>	YES <input type="checkbox"/>	
8. a. Will the proposed action result in a substantial increase in traffic above present levels? b. Are public transportation services available at or near the site of the proposed action? c. Are any pedestrian accommodations or bicycle routes available on or near the site of the proposed action?	NO <input checked="" type="checkbox"/> <input type="checkbox"/> <input type="checkbox"/>	YES <input type="checkbox"/> <input checked="" type="checkbox"/> <input checked="" type="checkbox"/>	
9. Does the proposed action meet or exceed the state energy code requirements? If the proposed action will exceed requirements, describe design features and technologies: _____ _____	NO <input type="checkbox"/>	YES <input checked="" type="checkbox"/>	
10. Will the proposed action connect to an existing public/private water supply? If No, describe method for providing potable water: _____ The proposed action does not require a water supply	NO <input checked="" type="checkbox"/>	YES <input type="checkbox"/>	
11. Will the proposed action connect to existing wastewater utilities? If No, describe method for providing wastewater treatment: _____ The proposed action does not require wastewater utilities	NO <input checked="" type="checkbox"/>	YES <input type="checkbox"/>	
12. a. Does the project site contain, or is it substantially contiguous to, a building, archaeological site, or district which is listed on the National or State Register of Historic Places, or that has been determined by the Commissioner of the NYS Office of Parks, Recreation and Historic Preservation to be eligible for listing on the State Register of Historic Places? b. Is the project site, or any portion of it, located in or adjacent to an area designated as sensitive for archaeological sites on the NY State Historic Preservation Office (SHPO) archaeological site inventory?	NO <input checked="" type="checkbox"/> <input checked="" type="checkbox"/>	YES <input type="checkbox"/> <input type="checkbox"/>	
13. a. Does any portion of the site of the proposed action, or lands adjoining the proposed action, contain wetlands or other waterbodies regulated by a federal, state or local agency? b. Would the proposed action physically alter, or encroach into, any existing wetland or waterbody? If Yes, identify the wetland or waterbody and extent of alterations in square feet or acres: _____ _____ _____	NO <input type="checkbox"/> <input checked="" type="checkbox"/>	YES <input checked="" type="checkbox"/> <input type="checkbox"/>	

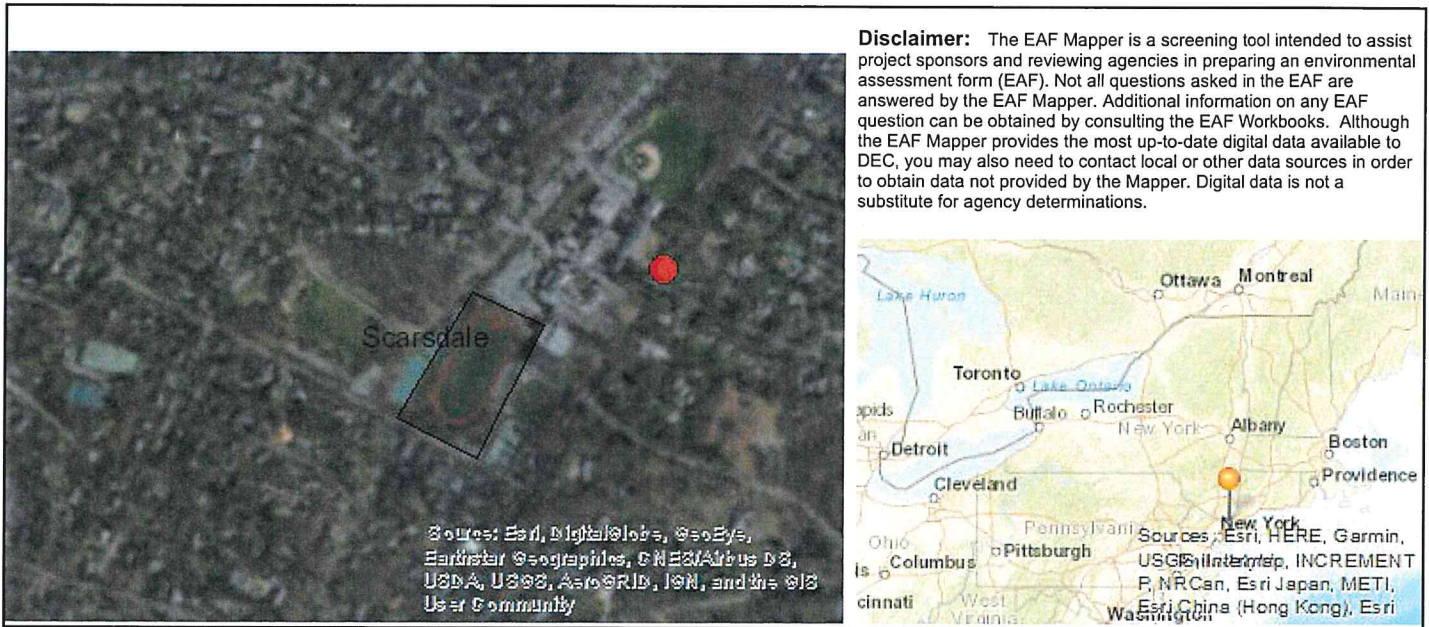
14. Identify the typical habitat types that occur on, or are likely to be found on the project site. Check all that apply: <input type="checkbox"/> Shoreline <input type="checkbox"/> Forest <input type="checkbox"/> Agricultural/grasslands <input type="checkbox"/> Early mid-successional <input type="checkbox"/> Wetland <input type="checkbox"/> Urban <input checked="" type="checkbox"/> Suburban		
15. Does the site of the proposed action contain any species of animal, or associated habitats, listed by the State or Federal government as threatened or endangered?	NO	YES
	<input checked="" type="checkbox"/>	<input type="checkbox"/>
16. Is the project site located in the 100-year flood plan?	NO	YES
	<input type="checkbox"/>	<input checked="" type="checkbox"/>
17. Will the proposed action create storm water discharge, either from point or non-point sources? If Yes,	NO	YES
	<input checked="" type="checkbox"/>	<input type="checkbox"/>
a. Will storm water discharges flow to adjacent properties?	<input type="checkbox"/>	<input type="checkbox"/>
b. Will storm water discharges be directed to established conveyance systems (runoff and storm drains)? If Yes, briefly describe:	<input type="checkbox"/>	<input type="checkbox"/>

18. Does the proposed action include construction or other activities that would result in the impoundment of water or other liquids (e.g., retention pond, waste lagoon, dam)? If Yes, explain the purpose and size of the impoundment:	NO	YES
	<input checked="" type="checkbox"/>	<input type="checkbox"/>

19. Has the site of the proposed action or an adjoining property been the location of an active or closed solid waste management facility? If Yes, describe:	NO	YES
	<input checked="" type="checkbox"/>	<input type="checkbox"/>

20. Has the site of the proposed action or an adjoining property been the subject of remediation (ongoing or completed) for hazardous waste? If Yes, describe:	NO	YES
	<input checked="" type="checkbox"/>	<input type="checkbox"/>

I CERTIFY THAT THE INFORMATION PROVIDED ABOVE IS TRUE AND ACCURATE TO THE BEST OF MY KNOWLEDGE		
Applicant/sponsor/name: <u>Kristen Nannini, Agent of Scarsdale Public Schools</u> Date: <u>5/9/19</u>		
Signature: <u>Kristen Nannini</u> Title: <u>Agent - Consultant</u>		



Part 1 / Question 7 [Critical Environmental Area]	No
Part 1 / Question 12a [National or State Register of Historic Places or State Eligible Sites]	No
Part 1 / Question 12b [Archeological Sites]	No
Part 1 / Question 13a [Wetlands or Other Regulated Waterbodies]	Yes - Digital mapping information on local and federal wetlands and waterbodies is known to be incomplete. Refer to EAF Workbook.
Part 1 / Question 15 [Threatened or Endangered Animal]	No
Part 1 / Question 16 [100 Year Flood Plain]	Yes
Part 1 / Question 20 [Remediation Site]	No

Project:

Date:

Short Environmental Assessment Form
Part 2 - Impact Assessment

Part 2 is to be completed by the Lead Agency.

Answer all of the following questions in Part 2 using the information contained in Part 1 and other materials submitted by the project sponsor or otherwise available to the reviewer. When answering the questions the reviewer should be guided by the concept "Have my responses been reasonable considering the scale and context of the proposed action?"

	No, or small impact may occur	Moderate to large impact may occur
1. Will the proposed action create a material conflict with an adopted land use plan or zoning regulations?	<input checked="" type="checkbox"/>	<input type="checkbox"/>
2. Will the proposed action result in a change in the use or intensity of use of land?	<input type="checkbox"/>	<input checked="" type="checkbox"/>
3. Will the proposed action impair the character or quality of the existing community?	<input checked="" type="checkbox"/>	<input type="checkbox"/>
4. Will the proposed action have an impact on the environmental characteristics that caused the establishment of a Critical Environmental Area (CEA)?	<input checked="" type="checkbox"/>	<input type="checkbox"/>
5. Will the proposed action result in an adverse change in the existing level of traffic or affect existing infrastructure for mass transit, biking or walkway?	<input checked="" type="checkbox"/>	<input type="checkbox"/>
6. Will the proposed action cause an increase in the use of energy and it fails to incorporate reasonably available energy conservation or renewable energy opportunities?	<input checked="" type="checkbox"/>	<input type="checkbox"/>
7. Will the proposed action impact existing:		
a. public / private water supplies?	<input checked="" type="checkbox"/>	<input type="checkbox"/>
b. public / private wastewater treatment utilities?	<input checked="" type="checkbox"/>	<input type="checkbox"/>
8. Will the proposed action impair the character or quality of important historic, archaeological, architectural or aesthetic resources?	<input checked="" type="checkbox"/>	<input type="checkbox"/>
9. Will the proposed action result in an adverse change to natural resources (e.g., wetlands, waterbodies, groundwater, air quality, flora and fauna)?	<input checked="" type="checkbox"/>	<input type="checkbox"/>
10. Will the proposed action result in an increase in the potential for erosion, flooding or drainage problems?	<input checked="" type="checkbox"/>	<input type="checkbox"/>
11. Will the proposed action create a hazard to environmental resources or human health?	<input checked="" type="checkbox"/>	<input type="checkbox"/>

Agency Use Only [If applicable]	
Project:	
Date:	

Short Environmental Assessment Form

Part 3 Determination of Significance

For every question in Part 2 that was answered "moderate to large impact may occur", or if there is a need to explain why a particular element of the proposed action may or will not result in a significant adverse environmental impact, please complete Part 3. Part 3 should, in sufficient detail, identify the impact, including any measures or design elements that have been included by the project sponsor to avoid or reduce impacts. Part 3 should also explain how the lead agency determined that the impact may or will not be significant. Each potential impact should be assessed considering its setting, probability of occurring, duration, irreversibility, geographic scope and magnitude. Also consider the potential for short-term, long-term and cumulative impacts.

Please see the attached Evaluation of the Magnitude and Importance of Project Impacts.

<input type="checkbox"/> Check this box if you have determined, based on the information and analysis above, and any supporting documentation, that the proposed action may result in one or more potentially large or significant adverse impacts and an environmental impact statement is required.	
<input checked="" type="checkbox"/> Check this box if you have determined, based on the information and analysis above, and any supporting documentation, that the proposed action will not result in any significant adverse environmental impacts.	
Scarsdale Public Schools <hr/> Name of Lead Agency	<hr/> Date
<hr/> Print or Type Name of Responsible Officer in Lead Agency	<hr/> Title of Responsible Officer
<hr/> Signature of Responsible Officer in Lead Agency	<hr/> <i>Kristen Ammirati</i> 5/9/19 Signature of Preparer (if different from Responsible Officer)

PRINT FORM

Evaluation of the Magnitude and Importance of Project Impacts

The lead agency must complete an evaluation for every question in the EAF Part 2 - Identification of Potential Project Impacts, where the impact has been identified as potentially moderate to large or where there is a need to explain why a particular element of the proposed action will not, or may, result in a significant adverse environmental impact.

The subject site is utilized as Scarsdale Public High School and the Butler Field is an existing athletic complex that contains a new turf infield, new track and bleachers and is surrounded by tennis courts, parking lots and support infrastructure in addition to the main school building. The surrounding tennis courts are currently illuminated by pole mounted metal halide overhead lights every day until 10PM regardless of use. Currently the District utilizes approximately 15 temporary lights to illuminate Butler Field for approximately 7 evening sport events in the Fall semester and limited practices. The installation of the 4 overhead sport lighting poles will allow the District a permanent solution to house the continued evening sport and recreation activities at Butler Field.

There is a possibility that the installation of the permanent sport lights will change, and potentially increase, the duration of use of the field. The District is currently designing a Plan for Maximum Use of the field, specifically working with the community to meet both the needs of the athletic and recreational uses, but also address the concerns of the immediately adjoining community neighbors as well as the District, at large. The overhead lights will only be turned on at dusk and later. This Plan includes a specific time limit to turn off the lights by 8PM for sport practice nights. The Plan will also limit the total number of events that will occur at the field in which the lights will remain on past 8PM. The number of events will be less than 20 but no more than what is dictated in the final Plan. On evenings when later sporting events occur, expected Thursdays through Saturdays only, the lights will be turned off immediately following the event which is not expected to exceed 10:30PM, but shall be no later than 11PM. Regardless, all operating hours of the overhead lights shall be in compliance with the Plan for Maximum Use.

The proposed lights specified for project are the Musco TLC for LED® (Total Light Control), a brochure for this product is attached. This lighting system boasts; “With Musco’s Total Light Control—TLC for LED®, we’ve taken LED to a level of performance and precision never before seen in sports lighting. It means no disruptive glare into nearby homes and the preservation of dark skies above.”

Since Butler Field is already utilized as a sport complex hosting night activities which includes pre-existing lighting and the Project is limited to providing a permanent solution to an existing temporary fix, there will be no large impacts on character, critical environmental areas, traffic/mass transit, energy expenditure, potable or waste-water, natural resources, erosion or flooding, environmental resources or human health as a direct or indirect result of the Project.

The New York State Parks, Recreation and Historic Preservation Law, Section 14.09, requires State agencies to consult with the commissioner if it appears that any project which is being planned may or will cause any change, beneficial or adverse, in the quality of any historic, architectural, archeological or cultural property that is listed on the National or State Register of Historic Places or that is determined by the commissioner to be eligible for listing on the either Register. The Scarsdale High School has been previously evaluated and determined to be “Not Eligible” for listing on either Registers, therefore, no impacts on these resources are foreseen.

Evaluation of the Magnitude and Importance of Project Impacts

Acknowledgement shall be given to the District which is further engaging the community and preparing an Event Management Plan which will be a subset of the Emergency Action Plan. The Event Management Plan will address procedural items effecting the local community and District.

Please refer back to EAF Part 3 for the Determination of Significance.

Introducing
TLC[®] for LED
Total Light Control[™]



We Make It Happen[®]

TLC[®] for LED[®]

Total Light Control[™]

Continuing the commitment to excellence...

Keeping good lighting affordable...

Guaranteed for 25 years, from foundation to poletop.

Light-Emitting Diode (LED) is a new tool but the issues for sports lighting are the same. For nearly a decade, the Musco Team has been testing the LED light source and applying it on projects where it was the best choice. While LED saved energy, for a typical recreational facility the hours of operation weren't great enough to offset the higher cost.

We've researched LED's distinctive challenges and advantages and applied our knowledge of light control to the unique characteristics of the diode, assuring the quality of lighting for which Musco is known.

We've paired our expertise in controlling light with the advancing output of LED to the point where we're confident it's a cost-effective option to consider for recreational facilities. With our patented BallTracker[™] technology, in-flight balls "pop" against night skies so that tracking the ball is easier than ever before.

The result is a system that makes Musco's great lighting, even better.

Better for players...

who want to perform their best and be able to track the entire flight of the ball.

Better for neighbors...

who don't want glare in or around their homes or lights left on when not in use.

Better for the night sky...

with bright, uniform light directed onto the field and not spilling above it.

Better for your budget...

an affordable system that's built to last and control operating costs.

And...you can mark maintenance off your list for 25 years!

The Musco Team looks for the best combination of issues to achieve a solution to meet your needs—from structures, to quality of on-field light, to off-site impact, to energy and costs.

Control

from foundation to poletop...

from the light source to the field,
preserving the night sky...

assuring the results you expect,
day 1... year 1... and for 25 years.



Still Light-Structure System™...

5 Easy Pieces™ complete from foundation to poletop.

Our Light-Structure System™ has delivered long-term performance for thousands of customers around the world.

Lights, structures, and electrical components are engineered to work together. This assures the designed lighting gets in place and stays there over the life of the system, while also maintaining and protecting the operating environment so the components continue to function.

We've included features like easy to reach remote drivers, integrated grounding, and surge protection to ensure the longevity of the LED's sensitive electronic components.

The Light-Structure System™ adapts to support both LED and metal halide light sources.

25 years of proven performance



Control
from the foundation to the poletop.



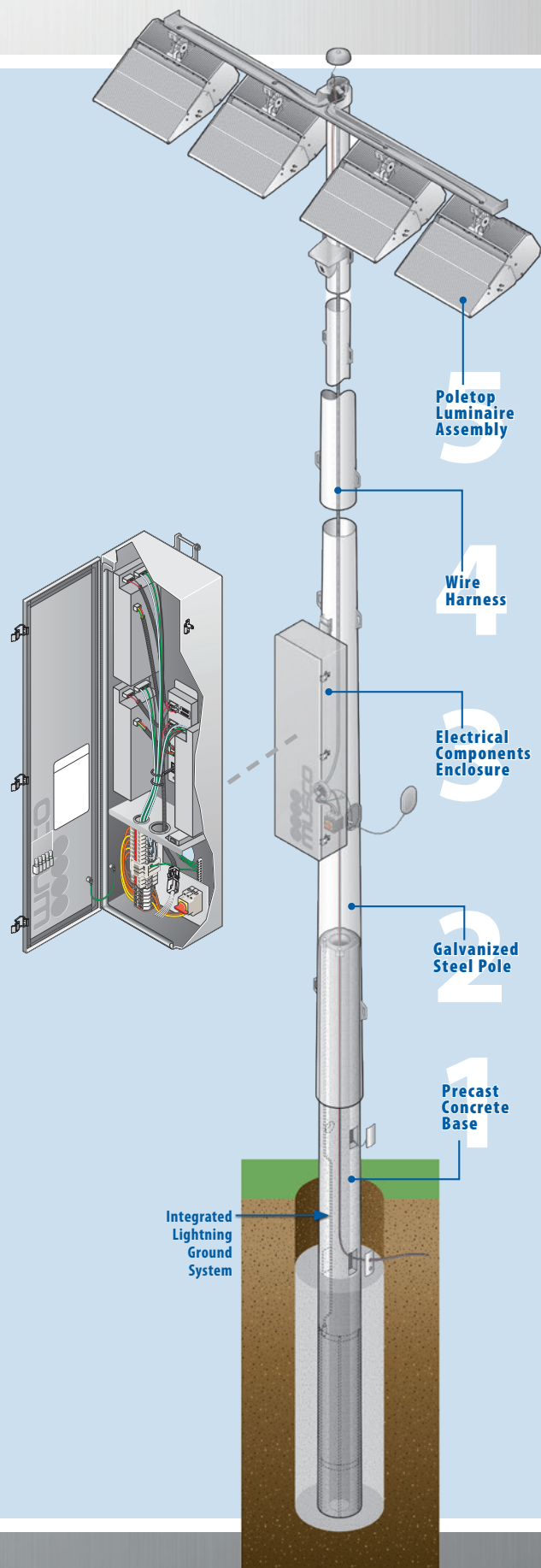
TLC for LED®
Total Light Control™



Other Light Source Option
Green Generation® Lighting
Metal Halide
10 year warranty

"LEDs must be carefully integrated into lighting fixtures. The efficiency of a poorly designed fixture that uses even the best LEDs will be only a fraction of what it would be if the fixture were well-designed, and the design can also affect lumen maintenance."

— U.S. Department of Energy
www.energy.gov/eere/ssl/led-basics



Musco can light a ballfield better than ever.

We create controlled light, not floodlights.

An LED floodlight is a serious step backward when it comes to the quality of light on your field. It may flood light into the neighborhood, into the night sky, and into the eyes of players.

New Tool

LED brings many benefits and new opportunities, but it's a tool, not a solution. Controlling the LED's intense, "rifle shot" of light is challenging. But with Total Light Control—TLC for LED®, we're able to achieve things never before possible—from pinpoint precision, to instant on/off, to varying light levels for different needs and sports presentation theatrics.

Same Issues

The key issues in sports lighting haven't changed: generating light, projecting it onto the target, keeping it out of the neighborhood and night sky, and creating an operating environment that allows it to last in real world conditions. Musco is able to carve out the area to be lighted and dramatically cut off any impact on the surrounding area. We use more of the light produced by the fixture, lose less light, and don't abuse the neighborhood. Our patented BallTracker™ light management technology puts vertical light precisely where it is needed. BallTracker leaves the night sky undisturbed while lighting the underside of aerial balls, making night-time tracking easier than ever before.

When you walk onto a Musco-lighted field, it just looks better.

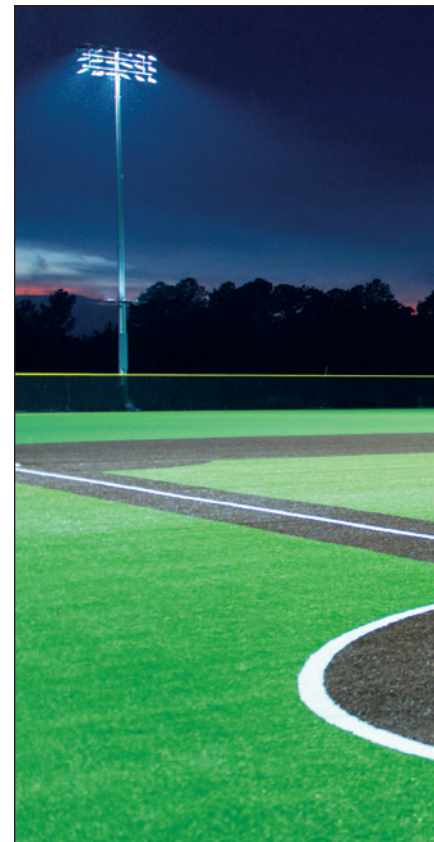
"When you stand at home plate and look out to center field, there's no glare, but the field is totally bright and you see how the white of the ball pops, it looks amazing."

— Tyson Kimm
Vice President of Perfect Game USA,
a major tenant at LakePoint Sports Community

Control
from the light source to the field.



San Diego Padres Petco Park · San Diego, California, USA



LakePoint Sports Community · Emerson, Georgia, USA

. for players, fans, and TV cameras.



Theatrics and special effects enhance fan and TV experience.



Mount Rushmore - Keystone, South Dakota, USA

Pinpoint control from 1,100 feet away highlights the target area while preserving surrounding darkness.



University of Notre Dame - Notre Dame, Indiana, USA

Sensational event lighting with dimming saves energy for high-usage, multi-use venues.



With patented BallTracker™ technology, players enjoy quality lighting, no glare, and better ability to track the entire flight of the ball.

The neighbors will love it.

Musco cares as much about preserving darkness as it does about creating light.

Emitting light is easy. But LED fixtures that can't effectively control the light being emitted brings the unintended consequences of abusive glare for players and neighbors, and wasteful spill into the night sky.

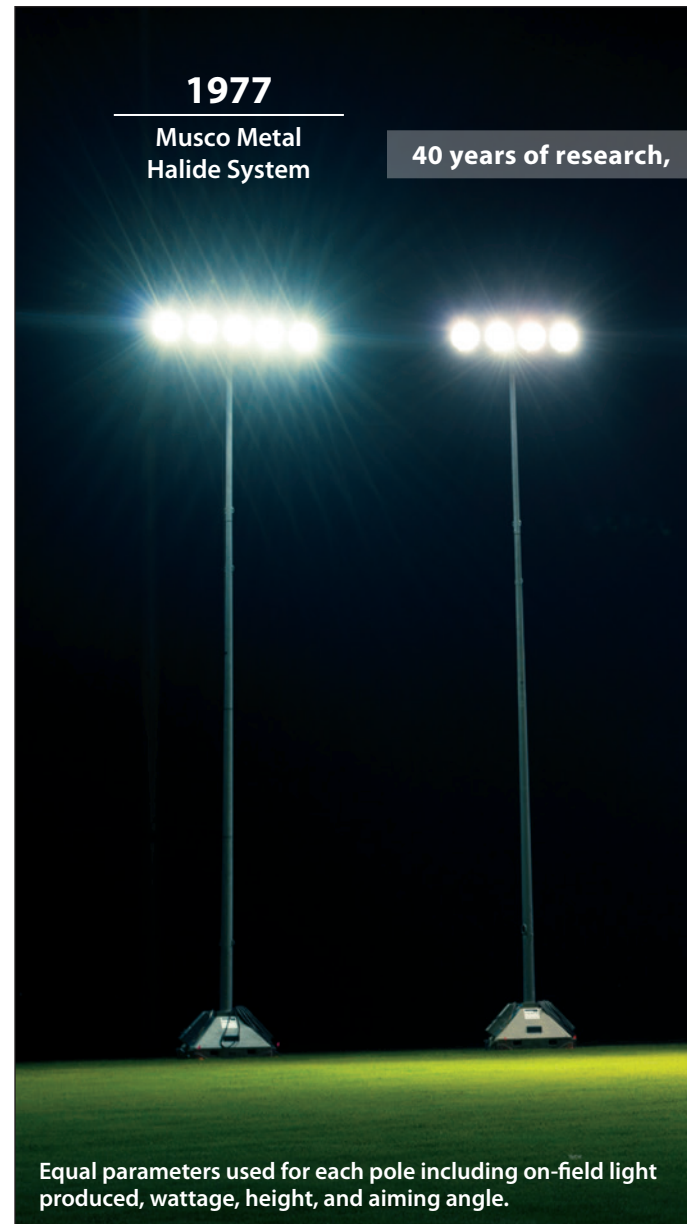
With Musco's Total Light Control—TLC for LED®, we've taken LED to a level of performance and precision never before seen in sports lighting. It means no disruptive glare into nearby homes and the preservation of dark skies above.

And it opens up new opportunities for where fields can be located within a community, and for existing fields that, until now, weren't able to install lights because of community push back.

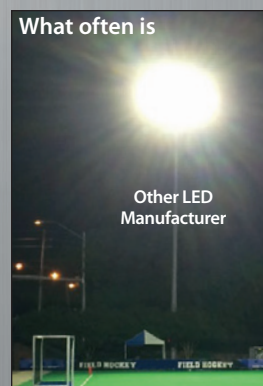
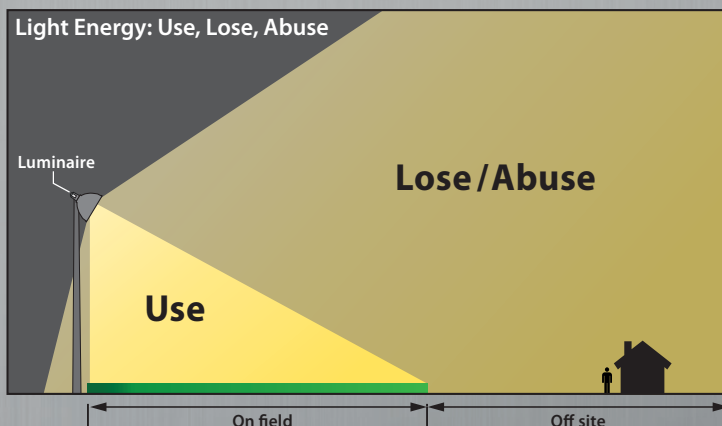
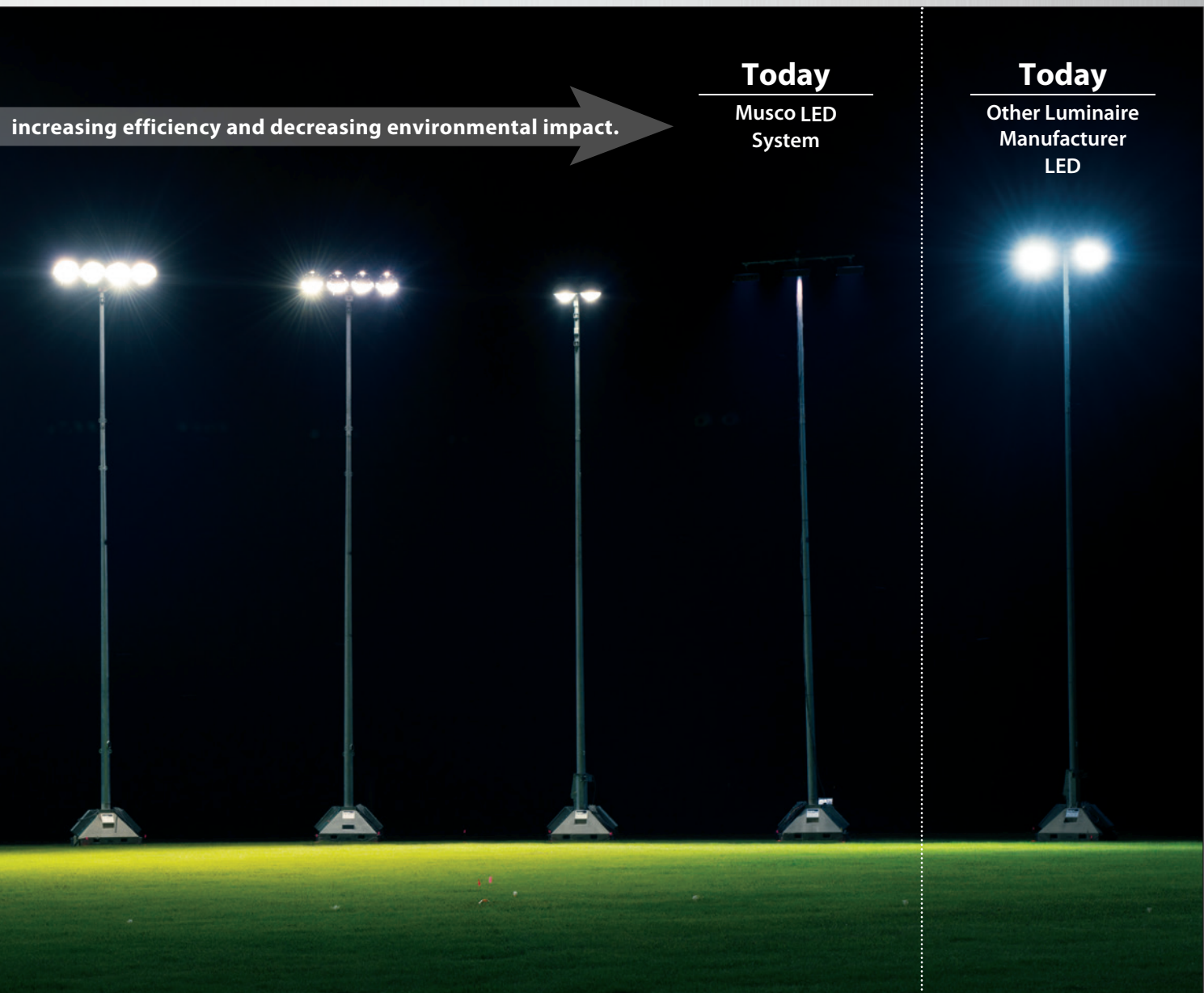
Control
preserving the night sky.

"Glyndon Park is in a naturally wooded residential area. We didn't want to illuminate the homes of neighbors in the area. I initially wasn't supportive of putting in traditional lights. The product Musco has developed allows us to light this field, yet light nothing else around it."

— Cathy Salgado,
Parks and Recreation Director, Vienna, VA



Glyndon Park Little League, Vienna, Virginia



And, your field is always ready to play.

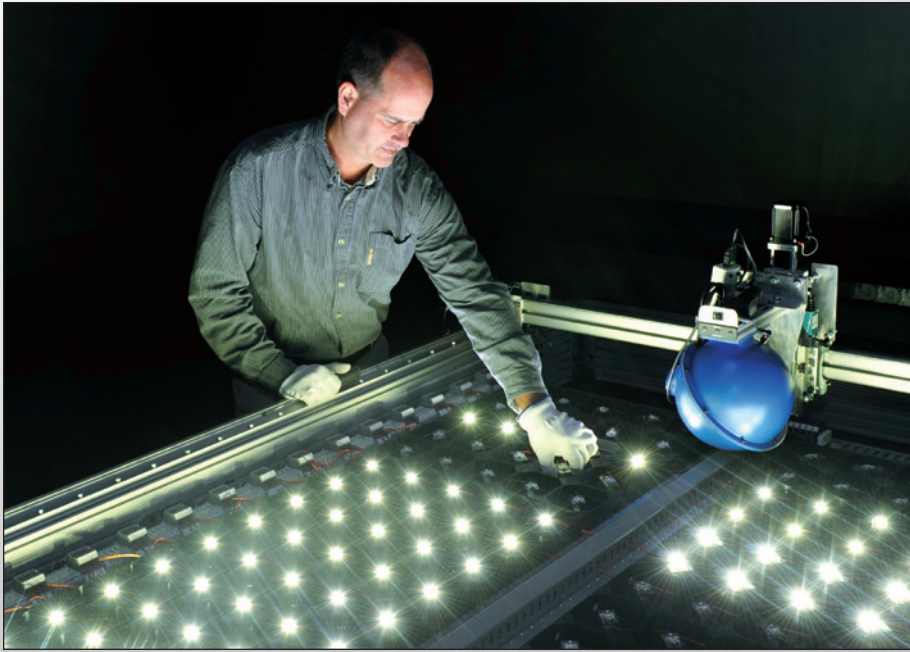
Here's a look at what the Musco Team has done in the last year as a partner in service to customers like you...

- Turned lights on and off remotely for more than 5.5 million games and events
- Conducted routine inspections and maintenance at over 11,000 fields
- Taken more than 350,000 calls, answering questions and helping with scheduling
- Carried out group lamp replacements on more than 30,000 metal halide fixtures
- Traveled enough miles servicing fields to circle the equator 24 times

And here's what our customers enjoy for 25 years...

Peace of mind for 9,125 days knowing that if a problem arises, we'll be there, and a budget with virtually ***zero dollars spent on maintenance, increased staff productivity*** resulting from not having to worry about managing your lights, plus ***restful nights***, free from midnight calls from unhappy neighbors about lights left on.

Control
assuring the results you expect.



We do the R&D to create it. We customize and apply solutions to your facility.

"Musco called to let us know there was an issue before we knew we had a problem."

— Stephen Cooke, CPRP, CYSA
Greenville County Recreation Athletics Manager, Taylors, SC



We're on the road to support it for 25 years.



We provide 24-7 Control-Link® support to monitor and operate your facility.



From metal halide to LED,
Musco's Light-Structure System™ performs
in real world conditions ***for 25 years, guaranteed.***
We Make It Happen.



Control

from foundation to poletop...

from the light source to the field,
preserving the night sky...

assuring the results you expect,
day 1... year 1... and for 25 years.





Parks, Recreation, and Historic Preservation

Resource Evaluation

Date: 09/08/2015

Staff: Paul Archambault

USN Number: 11948.000028

Name: Scarsdale High School

Location: 1057 Post Road, Scarsdale NY 10583

Resource Status:

1. **Determination:** Not Eligible
2. **Contributing:**

Criteria for Inclusion in the National Register:

- A. ☐ Associated with events that have made a significant contribution to the broad patterns in our history.
- B. ☐ Associated with the lives of persons significant in our past.
- C. ☐ Embodies the distinctive characteristics of a type, period or method of construction; or represents the work of a master; or possesses high artistic values; or represents a significant and distinguishable entity whose components may lack individual distinction.
- D. ☐ Have yielded, or may be likely to yield information important in prehistory or history.

Summary Statement:

Specifications

Speaker	HX-7B / HX-7W
Enclosure	Bias reflex type
Power Handling Capacity	Continuous pink noise: 250 W (IEC60268-5: 350 W) Continuous program: 750 W
Rated Impedance	8
Sensitivity	100 dB (1 W, 1 m)
Frequency Response	75 Hz - 20 kHz
Crossover Frequency	1.7 kHz
Directivity Angle	Horizontal: 100° Vertical: Depending on directivity angle mode
Speaker Component	Low frequency: 13 cm (5.1) cone type x 8 High frequency: Flare horn control horn with compression driver x 4
Input Terminal	Speaker NL AMP x 2 and M4 screw terminal
Finish	Enclosure: Polypropylene black or white (HX-7BW) Punched net: Surface-treated steel plate, black or white (HX-7BW), paint Hanging bracket: Steel plate, black or white (HX-7BW), paint
Dimensions	487 (W) x 664 (H) x 274 (D) mm (19.57" x 26.14" x 10.79")
Weight	30 kg (66.14 lb)
Accessory	Hanging bracket L, R (L and R are symmetrical to each other.) - 1 each Hanging bracket mounting bolt - 4
Option	Matching Transformer: MT-200 (*) Matching Transformer Adapter: HY-MT7 Speaker mounting bracket: HY-WB7BW, HY-WMB7W, HY-CNTBW-WP, HY-PT7BW Speaker stand adapter: HY-ST7

Speaker (Weather-proof)	HX-7B-WP / HX-7W-WP
Enclosure	Sealed type
Power Handling Capacity	Continuous pink noise: 250 W (IEC60268-5: 350 W) Continuous program: 750 W
Rated Impedance	8
Sensitivity	100 dB (1 W, 1 m)
Frequency Response	105 Hz - 20 kHz
Crossover Frequency	1.7 kHz
Directivity Angle	Horizontal: 100° Vertical: Depending on directivity angle mode
Speaker Component	Low frequency: 13 cm (5.1) cone type x 8 High frequency: Flare horn control horn with compression driver x 4
Input Terminal	M4 screw terminal, distance between terminals: 9 mm (0.35")
Water Protection	IP54 (Flare horn speaker module and M4 screw terminal)
Finish	Enclosure: Polypropylene black or white (HX-7BW-WP) Punched net: Surface-treated steel plate, black or white (HX-7BW-WP), and proof coating
Dimensions	487 (W) x 664 (H) x 274 (D) mm (19.57" x 26.14" x 10.79")
Weight	30 kg (66.14 lb)
Accessory	Terminal cover - 1, Terminal cover mounting screw - 4
Option	Matching Transformer: MT-200 (*) Matching Transformer Adapter: HY-MT7 Speaker mounting bracket: HY-TMB7W-WP, HY-MSTB-WP, HY-CNTBW-WP, HY-WMB7W-WP, HY-TMTB-WP

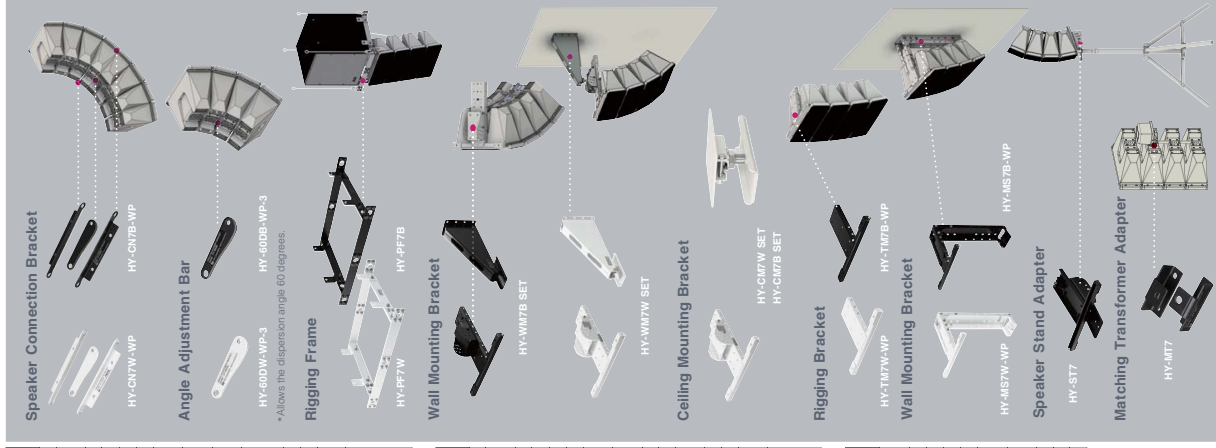
Subwoofer	FB-150B / FB-150W
Power Handling Capacity	Continuous pink noise: 200 W Continuous program: 600 W
Impedance	8
Sensitivity	93 dB (1 W, 1 m)
Frequency Response	40 Hz - 400 Hz (<10 dB)
Speaker Component	38 cm (15") cone type
Input Terminal	Speaker NL AMP x 2 and M5 screw terminal distance between terminals: 12.2 mm (0.48")
Finish	Enclosure: MDF, black or white (FB-150BW), urethane paint Punched net: Surface-treated steel plate, black & white (FB-150BW-WP), paint
Dimensions	505 (W) x 528 (H) x 477 (D) mm (19.88" x 20.79" x 18.77")
Weight	30 kg (66.14 lb)
Option	Speaker rigging frame: HY-PT7BW

(*)1 When mounting the MT-200 Matching Transformer to the speaker,

on optional HY-MT7 Matching Transformer Adapter is required.

(*)2 HY-WMB7W Speaker Mounting Bracket is separately required.

Optional Accessories



HX-7

Variable Dispersion Speaker



TOA Electronics, Inc.

www.toaelectronics.com

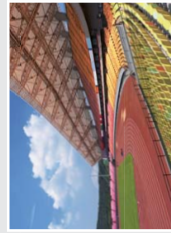
Specifications are subject to change without notice

From a Whisper to a Scream

Introducing the all new HX-7 variable dispersion line array with SYNC-Drive waveguide™ technology. Thanks to its award winning enclosure design, employing four modules per unit, the HX-7 allows precise adjustment of sound dispersion angles of 0 - 15 - 30 and 45 degrees.

Offering pristine clarity in a wide range of applications from sports venues, auditoriums, concert hall and challenging houses of worship. With the HX-7 you're getting affordable quality and stellar performance. What you get is all that can be heard, from a whisper to a scream, TOA has it covered.

Application examples



Stadiums



Houses of worship



Arenas/Indoor sports facilities



Auditoriums

Meets the need for powerful audio

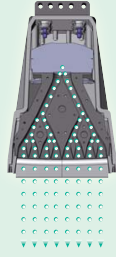
- Power handling: 750W Continuous Program @ 8 ohms
- Sensitivity (1W, 1m): 100 dB



- 2 x 5.5" LF speakers.
- Waveguide loaded 1" HF compression driver.

Increases coverage and enhances intelligibility

- Built-in isophasic wavefront control horn ensures precise HF control and superior reproduction of HF sounds.



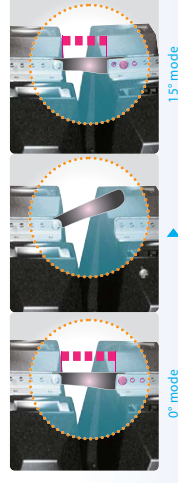
High frequencies compression driver

- Newly added 0° mode facilitates the most effective line array set-up.
* 60° mode is also available with optional HY-60D brackets.



Offers ease of installation

- Easily adjustable vertical dispersion angle.



Multi unit configuration

- Maximum two speaker units can be stacked.



Lineup of HX-7 Series

- High / mid-range unit



HX-7B/HX-7B-WP HX-7W/HX-7W-WP

- Low-range unit



FB-150B FB-150W

More compact version - HX-5 Series

- Power Handling: 600W Continuous Program @ 8 ohms
- Sensitivity (1W, 1m): 96 dB @ 60° mode to 99 dB @ 15° mode
- Components: 4 x 4.72" cone-type LF drivers and 12 x 1" balanced dome tweeters
- Dimension (W×H×D): 408 x 546 x 342 mm (16.1" x 21.5" x 13.5")



HX-5B/HX-5B-WP HX-5W/HX-5W-WP